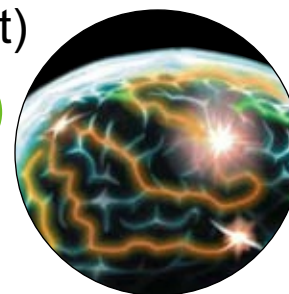


# GreatSmart™ Columns (formerly GRACE Smart)

High Quality HPLC Phases at Exceptional Value

- High purity phases
- Efficient and reproducible separations
- General use selectivity
- Exceptional value

best value

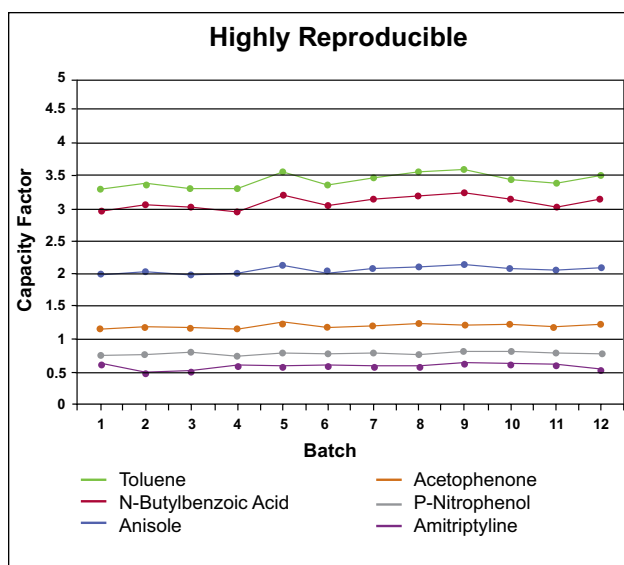


GreatSmart™ HPLC phases use high-purity silica and are monomerically bonded with uniform coverage. This translates into symmetrical peaks for acids/bases, and predictable reversed-phase selectivity. Whether routine analysis or new method development, use GreatSmart™ columns to get premium performance at exceptional value.

GreatSmart™ Phase Specifications				
Phase	Encapping	Surface Area	Pore Size	Particle Size
C18	TMS, non-polar	220m <sup>2</sup> /g	120Å	3, 5µm

## Reproducible Methods Start with Reproducible Columns

Our tightly controlled silica synthesis and bonding keep capacity factor and selectivity variations to a minimum. The advanced packing methods deliver consistently high column-to-column efficiency. Every column is individually tested and shipped with a quality assurance chromatogram.



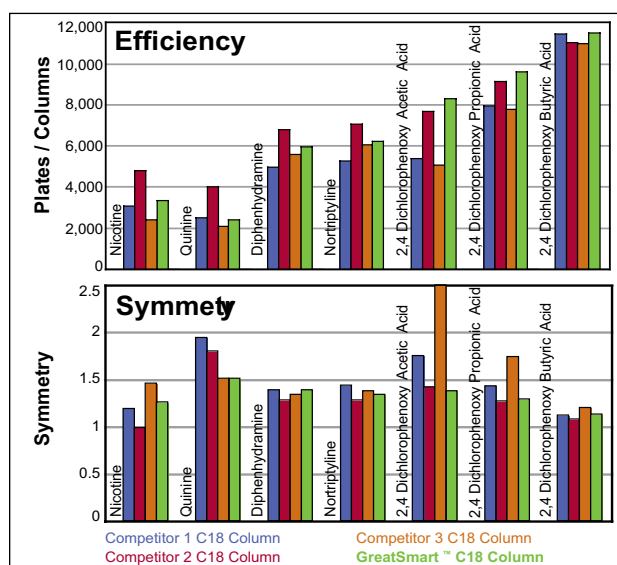
Consistent batch-to-batch capacity for acidic, basic, and neutral compounds.

### GraceSmart™ RP18 Columns

Packing	Format	i.d. x Length	Part No.
C18, 5µm	Analytical	4.6 x 150mm	5138812
	Analytical	4.6 x 250mm	5138810
	Analytical	2.1 x 150mm	5138811
	Analytical	2.1 x 250mm	5138813
C18, 3µm	Analytical	4.6 x 150mm	5141752
	Analytical	4.6 x 100mm	5141753
	Analytical	2.1 x 150mm	5141754
	Analytical	2.1 x 100mm	5141755
	Analytical	2.1 x 50mm	5141756
	Analytical	4.6 x 50mm	5141811

## Expect Competitive Performance

Six sigma techniques and lean manufacturing are key to our cost competitive position, without compromising quality or performance. GreatSmart™ columns show similar or better efficiency and asymmetries for challenging base and acid components in comparison to industry leading columns.



GreatSmart™ columns compare favorably to leading competitor columns.



# GreatSmart™ Columns (formerly GraceSmart)

