

HPLC Application 0003

Metanephrine, Serotonin

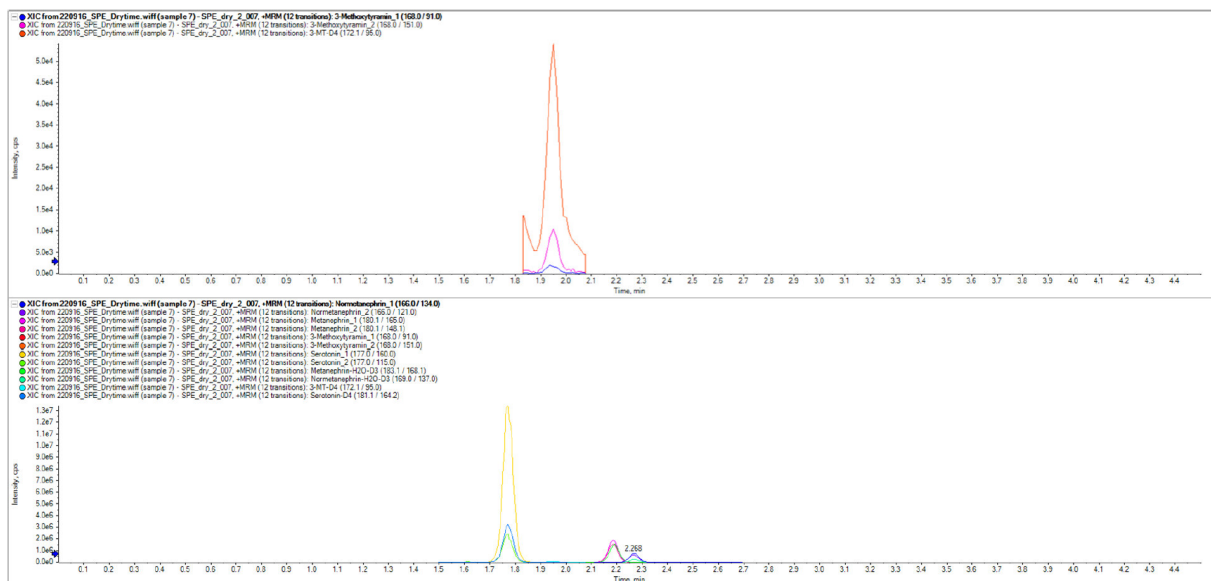
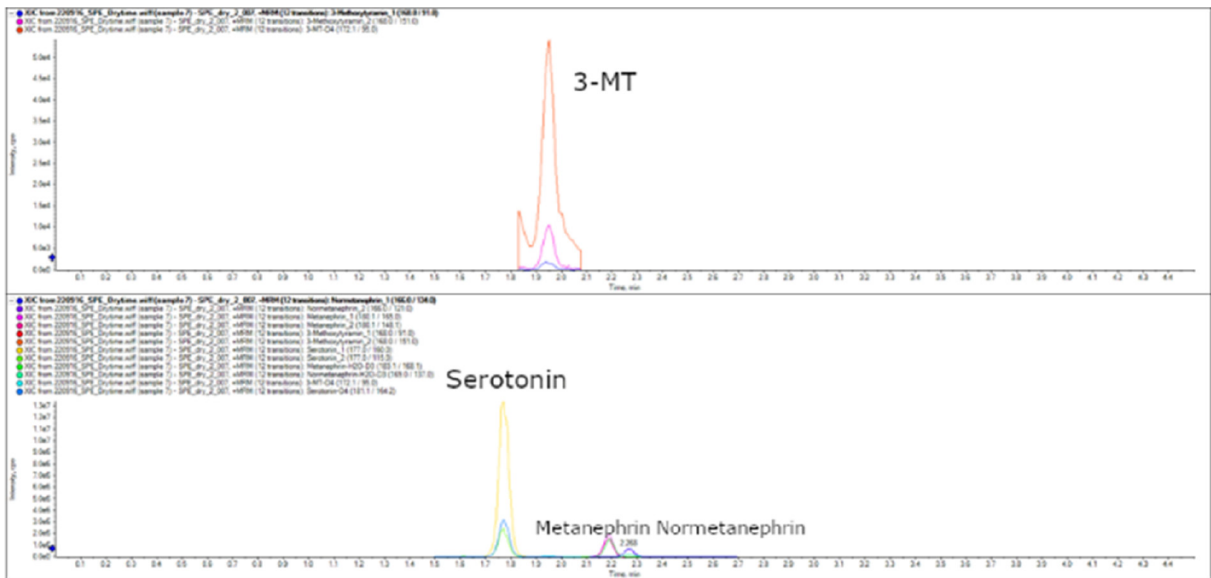
ID No.:	0003
Analyte:	Metanephrine + Serotonin
Material:	Reposil-Pur 60 Si, 3 µm
Column Size:	150 mm x 2 mm
Part No.:	r03.04.s1502
Eluent A:	MeCN + 15% H ₂ O , 30 mM NH ₄ FA pH 3
Eluent B:	95% H ₂ O 5% MeCN 30 mM NH ₄ FA pH 3
Elution type:	Gradient

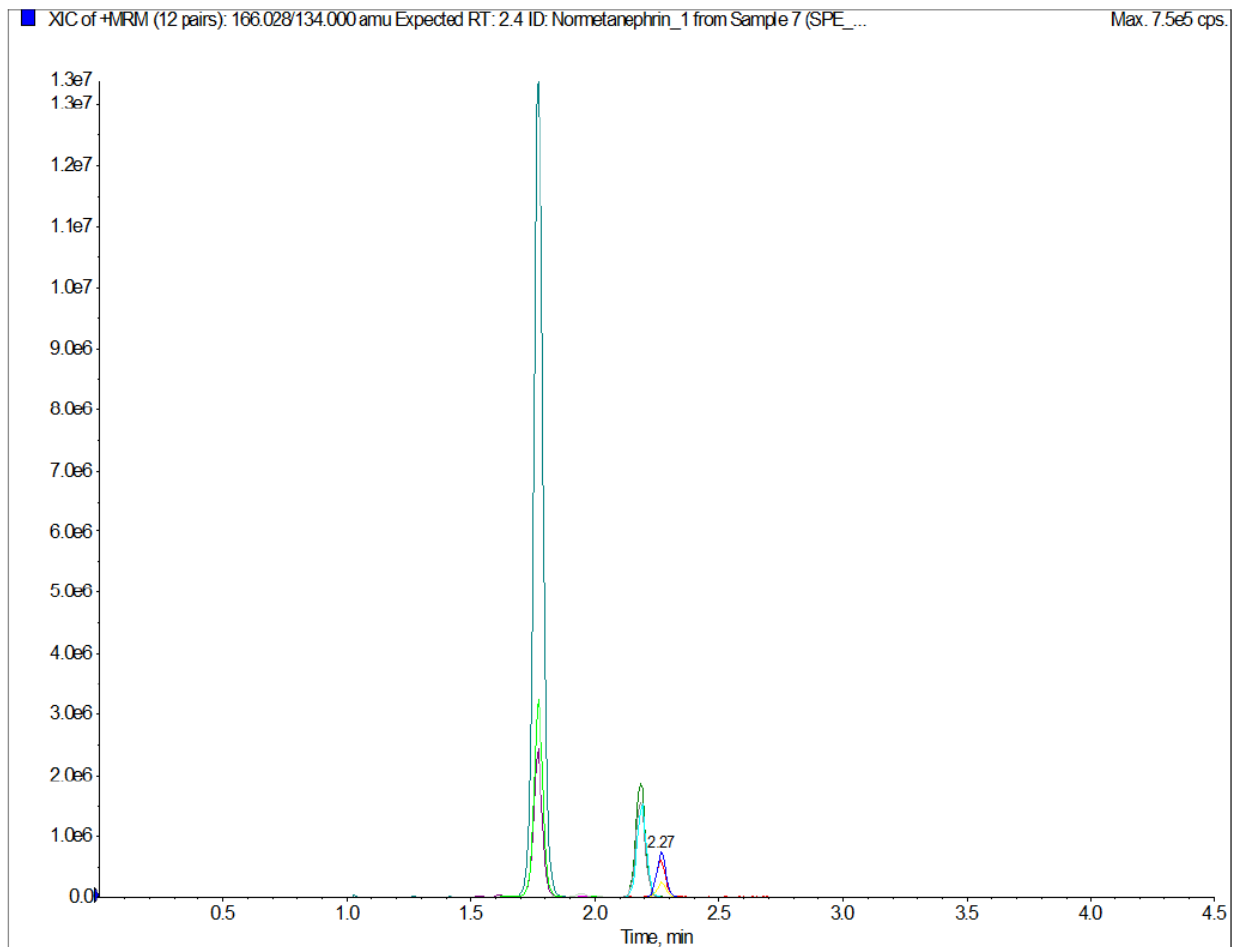
Time	Flow	%B
0	0.5	2.0
2	0.5	20
2.4	0.5	50
2.8	0.5	50
2.9	0.5	0
3.0	1.0	0
4.5	1.0	0

Flow Rate:	(see gradient table)
Temperature:	25 °C

Injection: Sample preparation with Oasis WCX 10 mg 250 µl Plasma +
Metanephrine 1000 ng/l
Normetanephrine 1000 ng/l
3-Methoxytyramine 1000 ng/l
Serotonine 100 µg/l
Elution in 300 µl Acetonitrile + Formic Acid
Injektion 30 µl on column

Detection: MS-Detection MS-Settings:
Sciex 6500 QTrap
Temp 400 °C
GS1 80
GS2 50
Curtain Gas 35
Declustering 50
Scheduled mrm





- Analytes:**
1. Serotonin
 2. Metanephrine
 3. Nor-Metanephrineysozyme

Application courtesy of Bioscientia Labor Karlsruhe, Am Rüppurrer Schloss 1, 76149 Karlsruhe

Dr. Maisch products are available globally. For more information contact your Dr. Maisch representative at info@dr-maisch.com