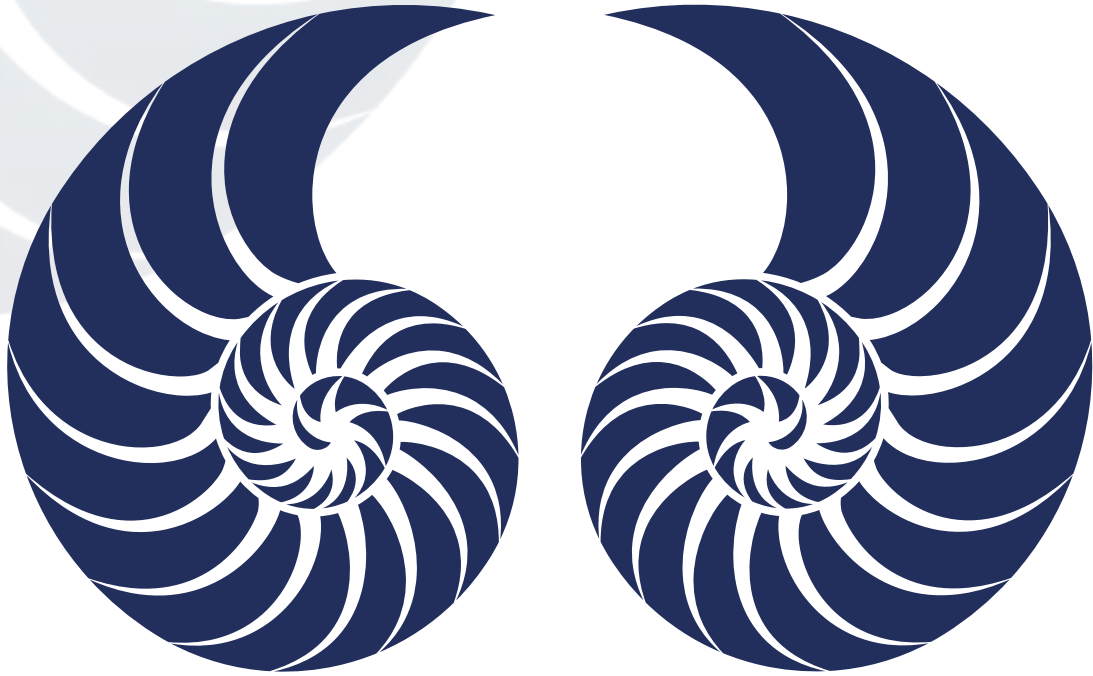


Dr. Maisch

Any Column, Any Size, Any Media

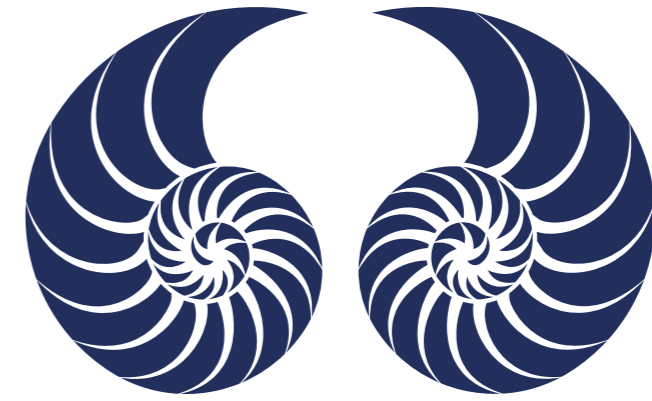


CHIRAL COLUMNS

MADE BY DR. MAISCH

CONTENT

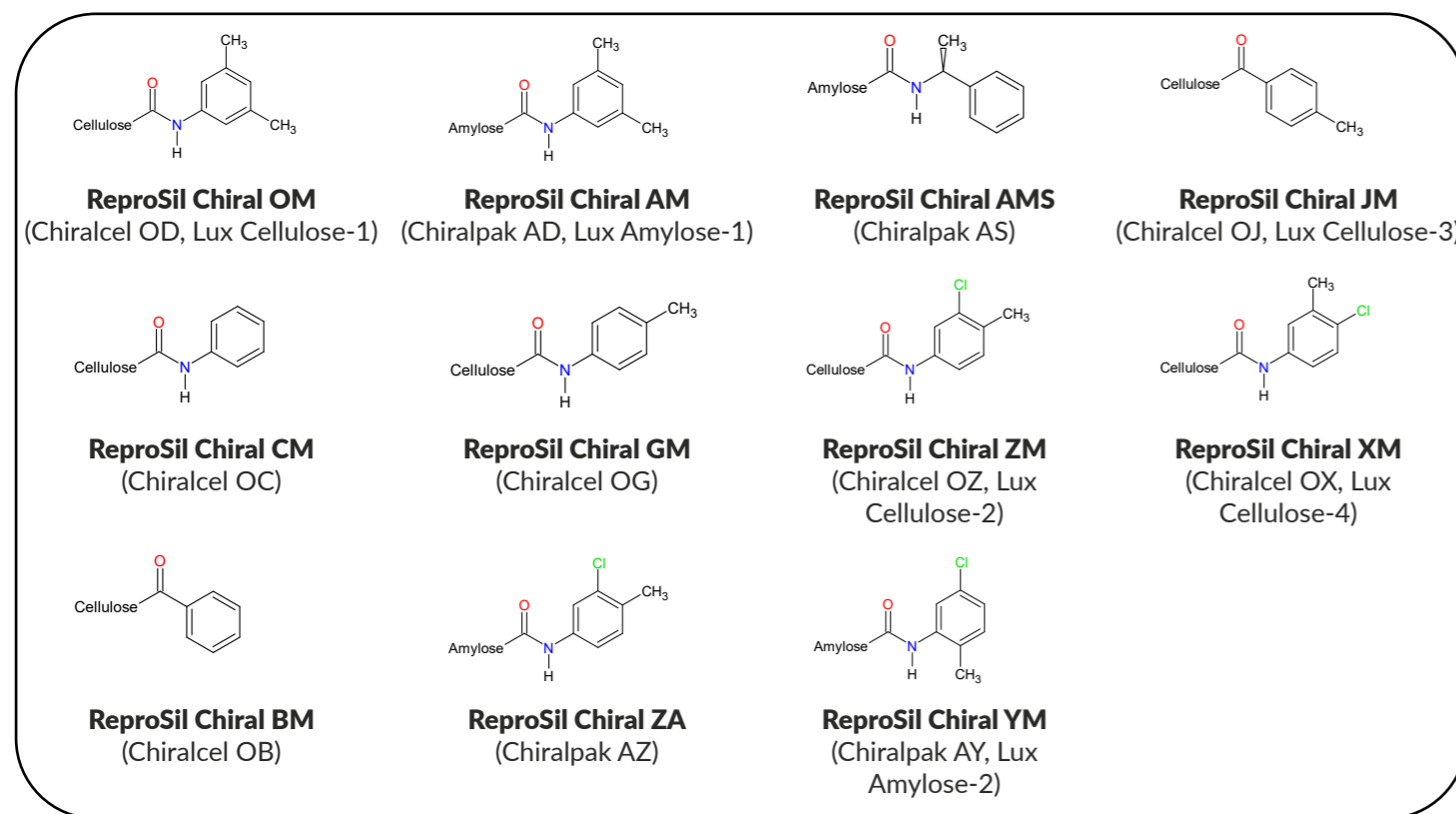
- P 4 - REPOSIL CHIRAL POLYSACCHARIDE PHASES
- CHIRAL SELECTORS NAMES AND STRUCTURES
- P 5 - CROSS REFERENCE LIST
- IMMOBILIZED POLYSACCHARIDE PHASES
- P 6-11 - INDEPENDENT CHIRAL SFC STUDY BY SYAME KHATER
AND CAROLINE WEST, UNIVERSITY OF ORLEANS
- P 12-13 - COLUMN COMPARISON CHIRAL OM & CHIRACEL ODH
- P 14-15 - SELECTIVITY OF JM vs. OJ (USP-L80)
- P 16-18 - COMPARISON OF IMMOBILISED REPOSIL CHIRAL
POLYSACCHARIDE PHASES WITH COMPETITORS COATED
EQUIVALENTS
- P 19 - TYPICAL MOBILE PHASE CONDITIONS AND SOLVENT
COMPATIBILITY
- P 20-21 - REPOSIL CHIRAL NR AND NR-R
- P 22 - REPOSIL CHIRAL - AGP
- P 23-24 - PREPARATIVE COLUMNS
- P 25-30 - AVAILABLE COLUMNS AND PRODUCT NUMBERS



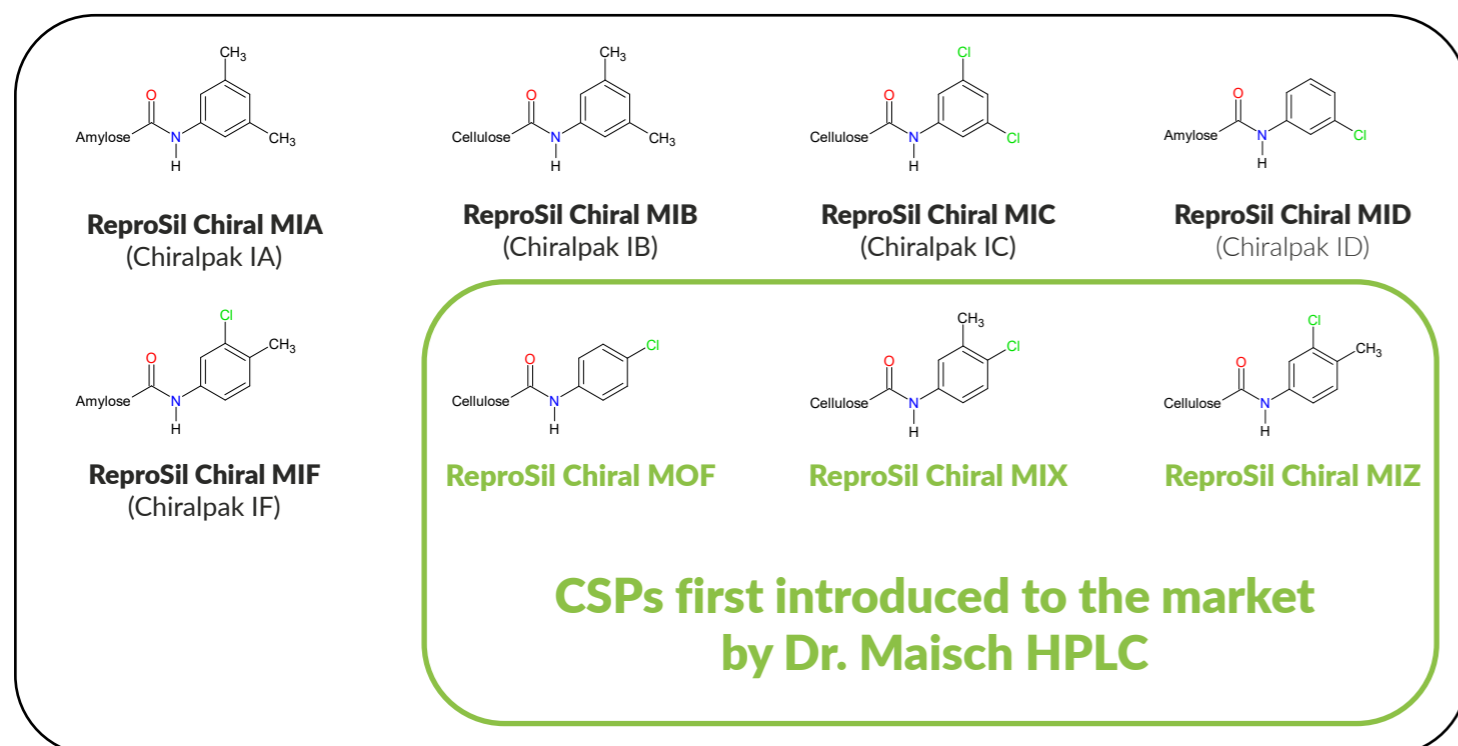
CHIRAL COLUMNS
MADE BY DR. MAISCH

From one of the biggest
High-Performance Liquid Chromatography
(HPLC) - Column manufacturers in Europe.

„COATED“ REPROSIL CHIRAL POLYSACCHARIDE PHASES



„IMMOBILISED“ REPROSIL CHIRAL POLYSACCHARIDE PHASES



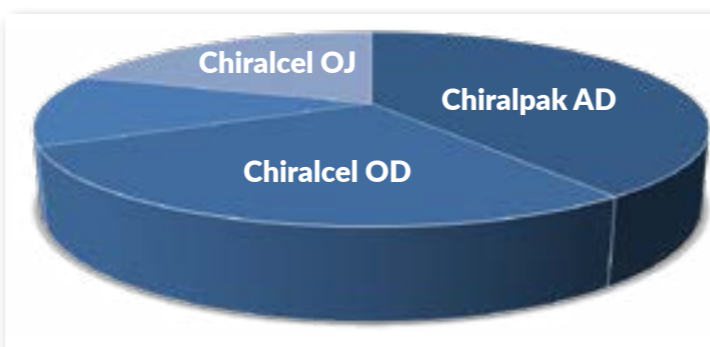
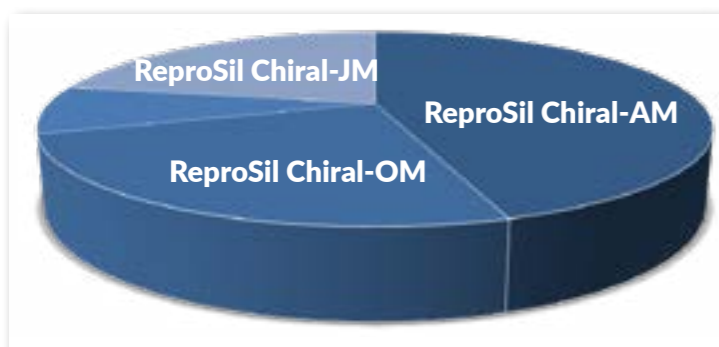
| Dr Maisch phases | Daicel alternative | Phenomenex-alternative | Phase description |
|---------------------|--------------------|------------------------|---|
| ReproSil Chiral-MIA | Chiralpak IA | Lux i-Amylose-1 | Amylose tris (3,5-dimethylphenylcarbamate) |
| ReproSil Chiral-MID | Chiralpak ID | | Amylose tris (3-chlorophenylcarbamate) |
| ReproSil Chiral-MIF | Chiralpak IF | | Amylose tris (3-chloro-4-methylphenylcarbamate) |
| ReproSil Chiral-MOF | | | Cellulose tris (4-chlorophenylcarbamate) |
| ReproSil Chiral-MIB | Chiralpak IB | | Cellulose tris (3,5-dimethylphenylcarbamate) |
| ReproSil Chiral-MIC | Chiralpak IC | Lux i-Cellulose-5 | Cellulose tris (3,5-dichlorophenylcarbamate) |
| ReproSil Chiral-MIX | | | Cellulose tris (4-chloro-3-methylphenylcarbamate) |
| ReproSil Chiral-MIZ | | | Cellulose (3-chloro-4-methylphenylcarbamate) |
| ReproSil Chiral-AM | Chiralpak AD | Lux Amylose-1 | Amylose tris (3,5-dimethylphenylcarbamate) |
| ReproSil Chiral-AMS | Chiralpak AS | | Amylose tris(S)-a-methylbenzylcarbamate) |
| ReproSil Chiral-YM | Chiralpak AY | Lux Amylose-2 | Amylose tris (5-chloro-2-methylphenylcarbamate) |
| ReproSil Chiral-ZA | Chiralpak AZ | | Amylose tris (3-chloro-4-methylphenylcarbamate) |
| ReproSil Chiral-BM | Chiralcel OB | | Cellulose Tribenzoate |
| ReproSil Chiral-CM | Chiralcel OC | | Cellulose tris (phenylcarbamate) |
| ReproSil Chiral-GM | Chiralcel OG | | Cellulose tris (4-methylphenylcarbamate) |
| ReproSil Chiral-JM | Chiralcel OJ | Lux Cellulose-3 | Cellulose tris (4-methylbenzoate) |
| ReproSil Chiral-OM | Chiralcel OD | Lux Cellulose-1 | Cellulose tris (3,5-dimethylphenylcarbamate) |
| ReproSil Chiral-XM | Chiralcel OX | Lux Cellulose-4 | Cellulose tris (4-chloro-3-methylphenylcarbamate) |
| ReproSil Chiral-ZM | Chiralcel OZ | Lux Cellulose-2 | Cellulose tris (3-chloro-4-methylphenylcarbamate) |

REPROSIL CHIRAL COLUMNS ARE COMPLEMENTARY AND SUCCESSFUL IN ACHIEVING MORE THAN 90% OF SEPARATIONS OF THE ANALYTES.

ReproSil Chiral AM, JM and OM allow similar hit rates as competitor's CSPs.

ReproSil CHIRAL COLUMNS

DAICEL CHIRAL COLUMNS



- ReproSil Chiral-AM
- ReproSil Chiral-OM
- Non resolved enantiomers
- ReproSil Chiral-JM

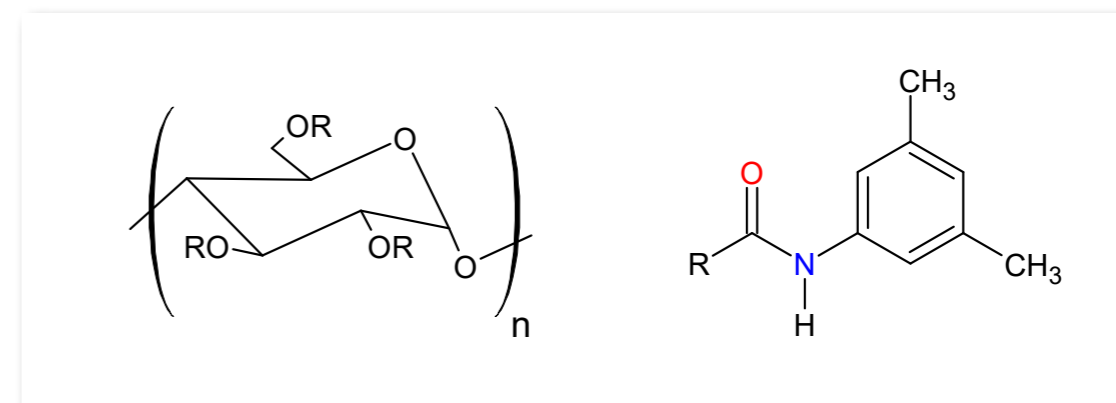
- Chiralpak AD
- Chiralcel OD
- Non resolved enantiomers
- Chiralcel OJ

EVALUATION OF REPROSIL CHIRAL-OM VS. OD

Evaluation of a silica phase modified with cellulose tris-(3,5-dimethylphenyl-carbamate) „ReproSil Chiral-OM“ in supercritical fluid chromatography. Syame Khater and Caroline West, University of Orleans, CNRS UMR 7311, ICOA.

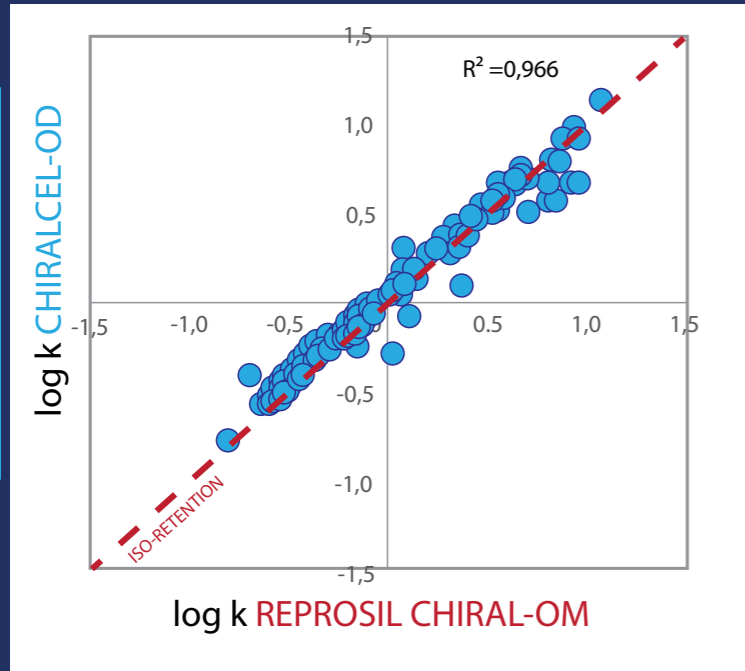
All experiments were performed on a Jasco SFC system and an Acquity UPC² system. ReproSil Chiral-OM is based on silica coated with tris-(3,5-dimethylphenylcarbamate) of cellulose. Two hundred and thirty achiral compounds and one hundred and thirty chiral racemic compounds were screened on different polysaccharide-type chiral stationary phases in SFC in the following operating conditions: CO₂/MeOH (90:10), flow rate 3 ml/min, oven temperature 25°C, outlet pressure 150 bars.

NON-SPECIFIC INTERACTIONS AND RETENTION



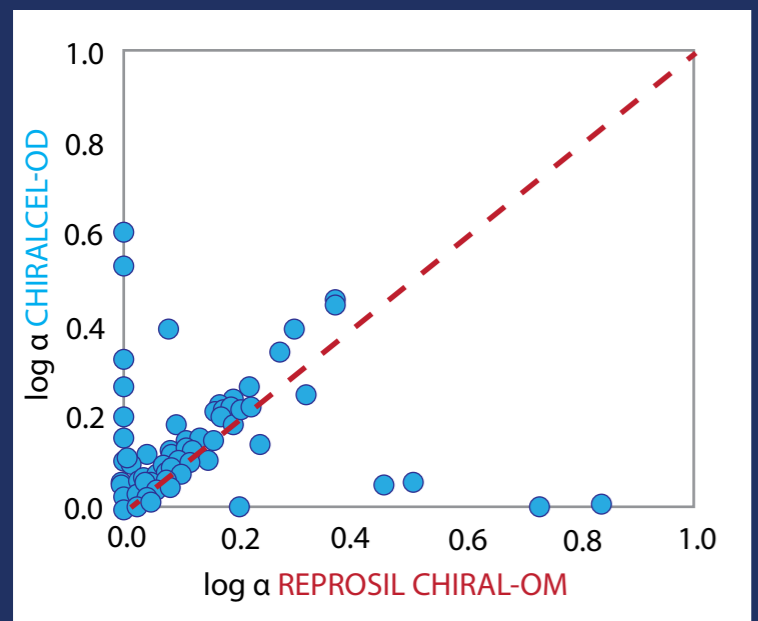
Retention on cellulose tris-(3,5-dimethylphenylcarbamate) could be explained by non-specific interactions such as π-π interactions, hydrogen bonding and stereo-induced interactions.

Log k CHIRALCEL-OD



Log k ReproSil Chiral-OM

Log α CHIRALCEL-OD



Log α ReproSil Chiral-OM

The investigation on non-specific interactions that control retention is based on the analysis of 230 achiral compounds.

The κ - κ plot on the left compares the logarithms of retention factors of 168 achiral species on Chiralcel-OD vs. ReproSil Chiral-OM. The phases are expected to be similar since they possess the same Chiral selector ($R^2 = 0.966$). They would provide similar non-specific interactions.

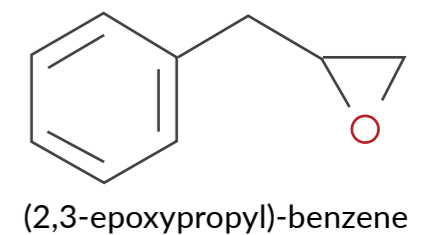
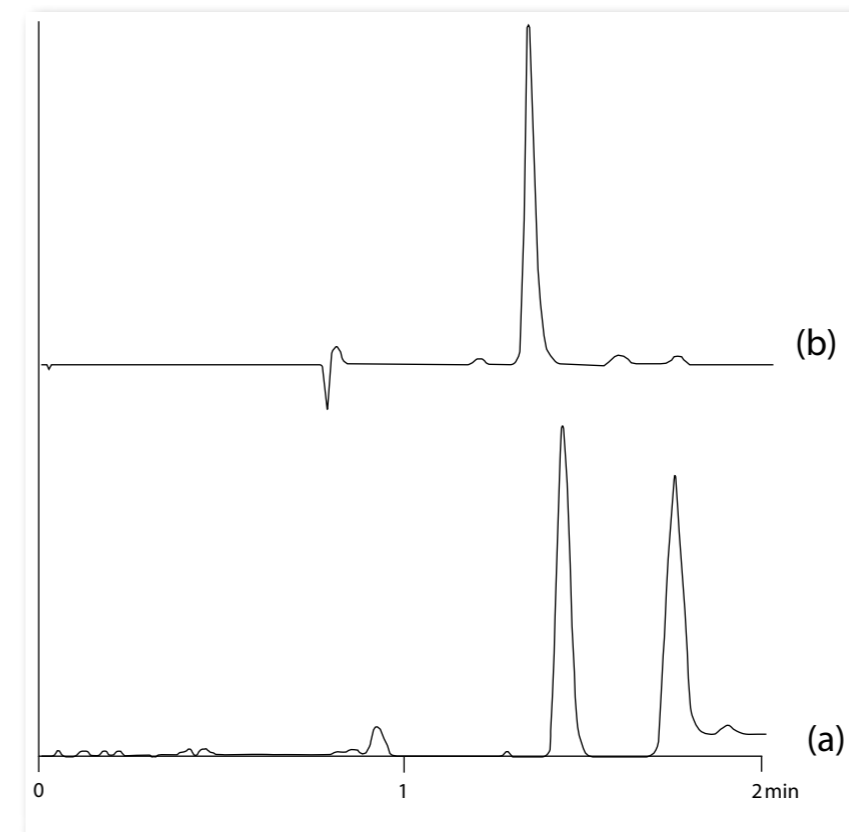
The α - α plot below compares the logarithm of separation factors measured for 130 racemates on ReproSil Chiral-OM vs. Chiralcel-OD.

The major part of the compounds is located on the dotted line, indicating similar separation behaviour of the two columns.

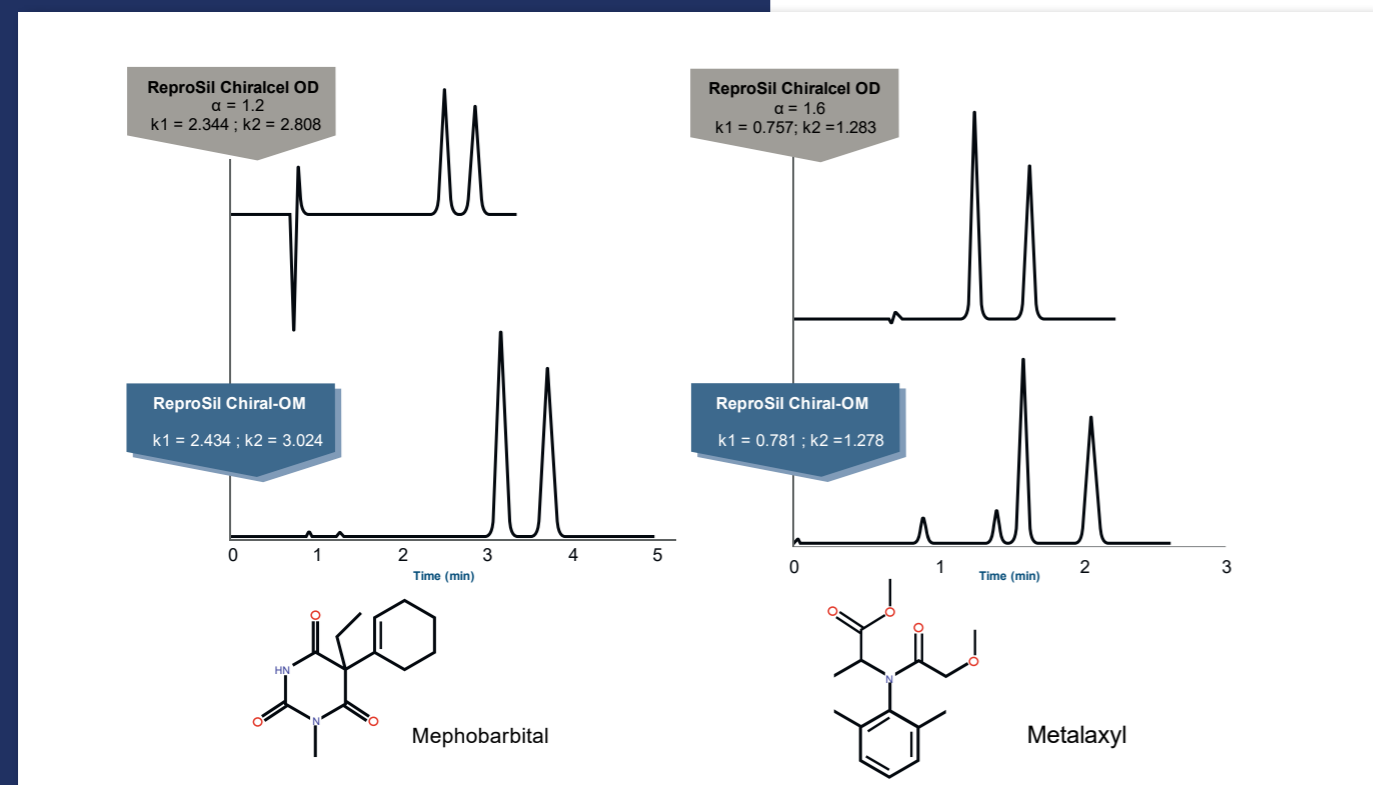
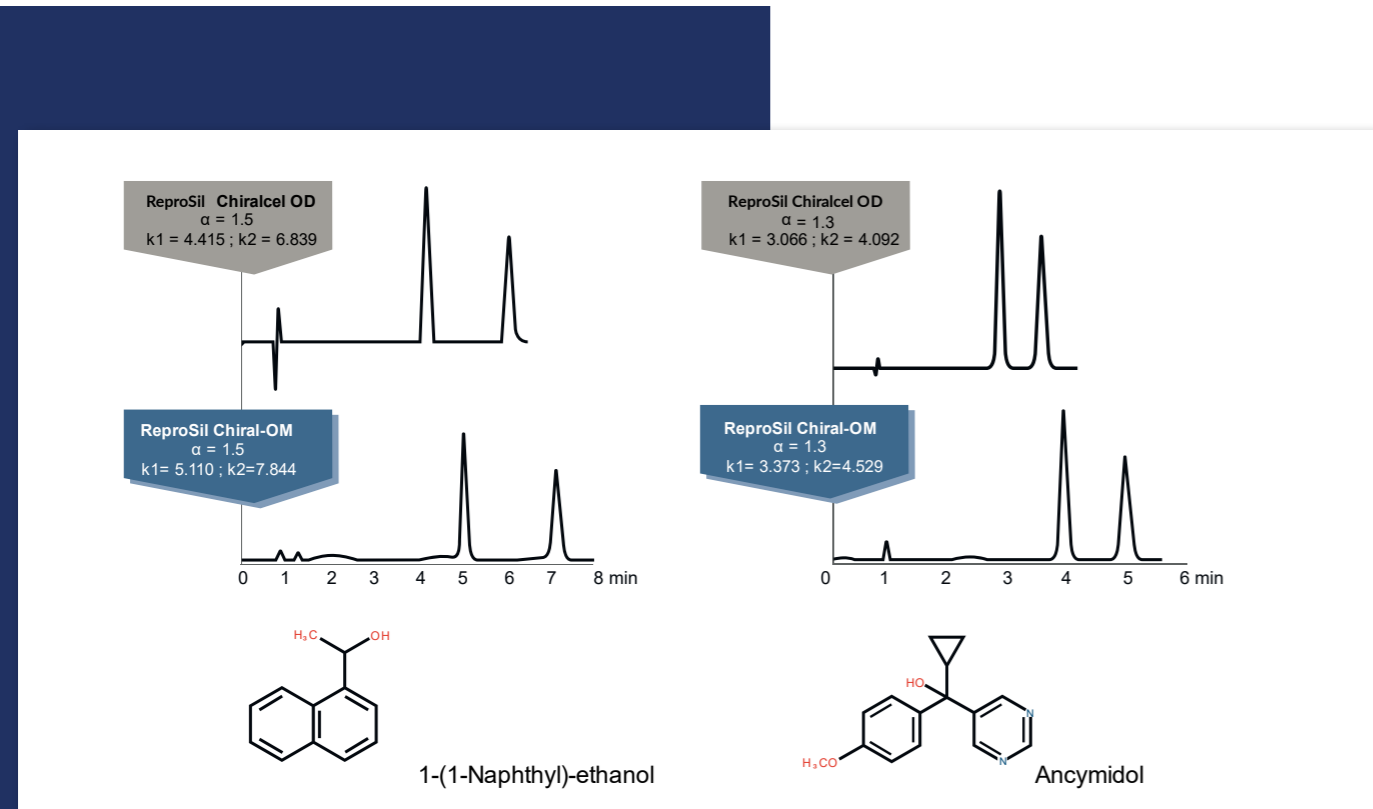
Chiralcel-OD provides a higher number of unique hits. Indeed, 81% of the tested chiral species are resolved on ReproSil Chiral-OM against 86% on Chiralcel-OD. However, some racemates are well separated on ReproSil Chiral-OM with little or no separation on Chiralcel-OD.

All experiments were performed on a Jasco SFC system and an Acquity UPC² system. ReproSil Chiral-OM is based on silica coated with tris-(3,5-dimethylphenylcarbamate) of cellulose. Two hundred and thirty achiral compounds and one hundred and thirty chiral racemic compounds were screened on different polysaccharide-type chiral stationary phases in SFC in the following operating conditions: CO₂/MeOH (90:10), flow rate 3 ml/min, oven temperature 25°C, outlet pressure 150 bars.

The following chromatograms illustrate the complementarity of the generic phases having cellulose tris-(3,5-dimethylphenyl-carbamate) as chiral selector in the course of method development: Focus on ReproSil Chiral-OM versus Chiralcel-OD. The chromatograms illustrate the chiral compounds that are well resolved on ReproSil Chiral-OM (a) but have no separation on Chiralcel-OD (b).

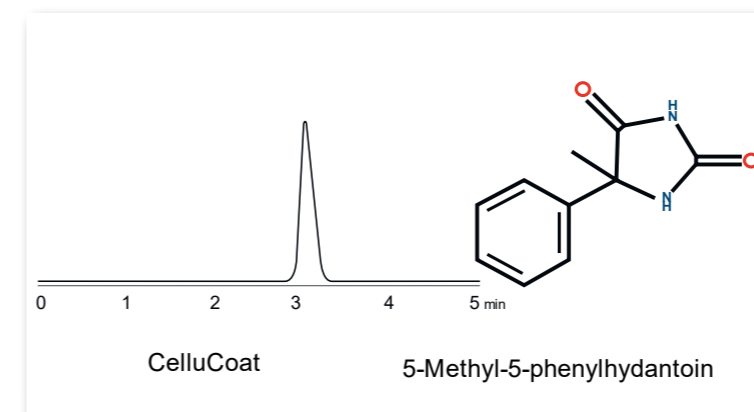
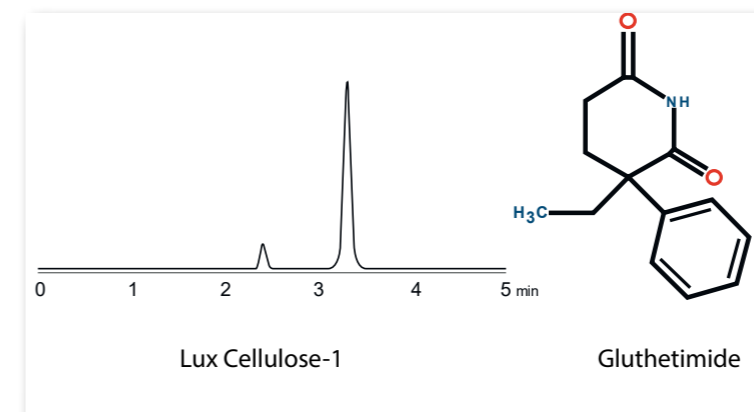
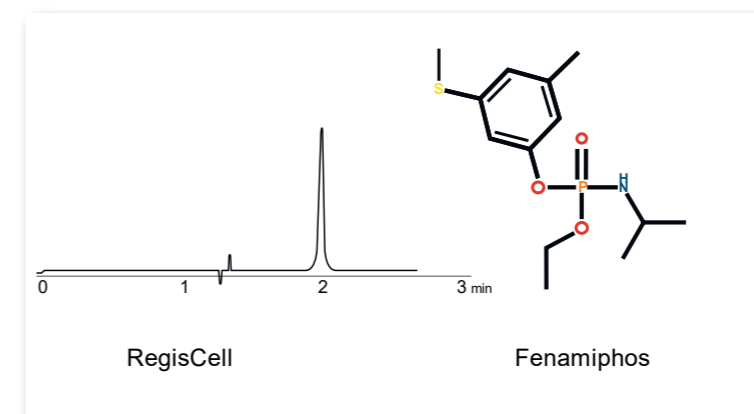


COMPARISON OF REPOSIL CHIRAL-OM AND REPOSILCHIRALCEL

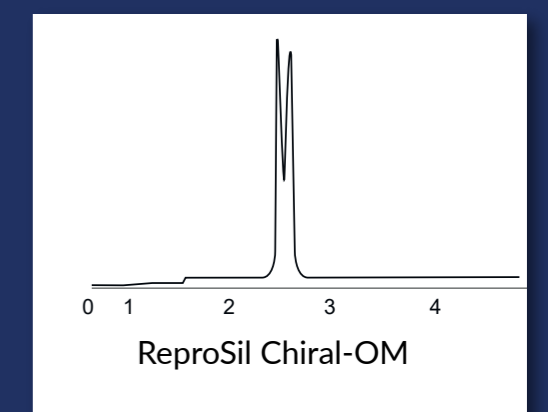
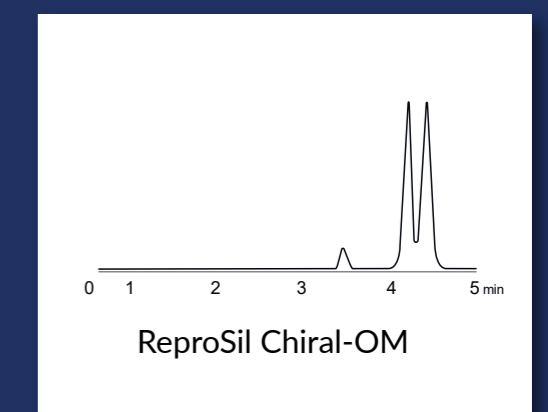
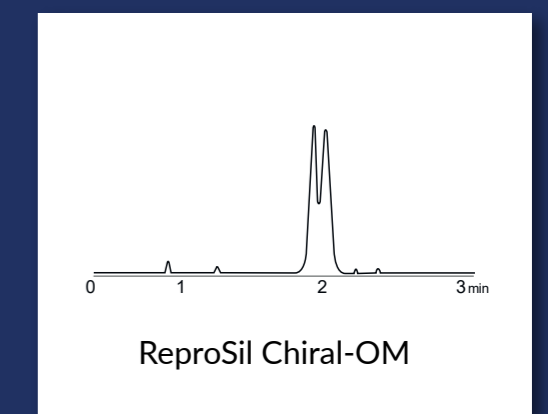


The analysis of fenamiphos, glutetimide and 5-methyl-5-phenylhydantoin on ReproSil Chiral-OM provide a better starting point for a method development than those on RegisCell, Lux Cellulose-1 or Cellucoat, respectively.

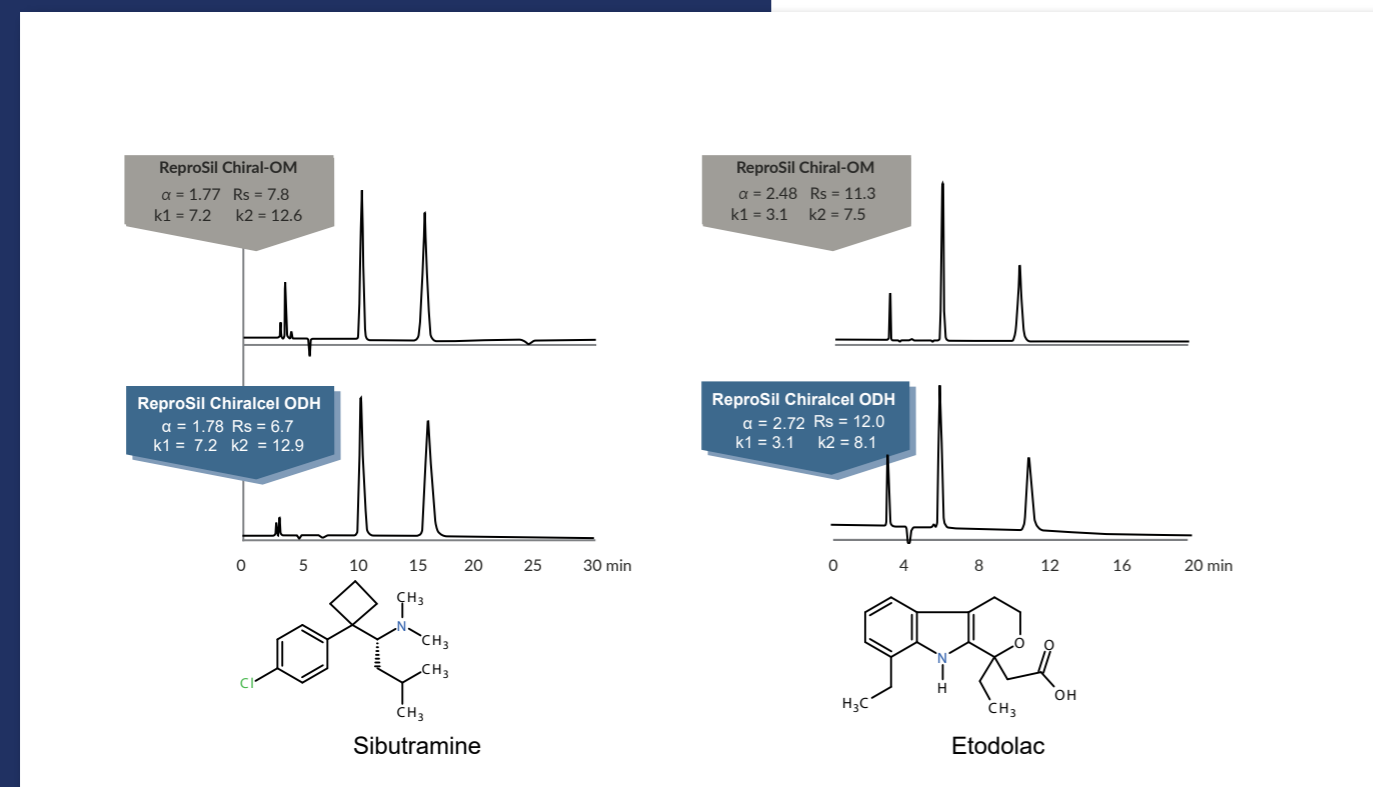
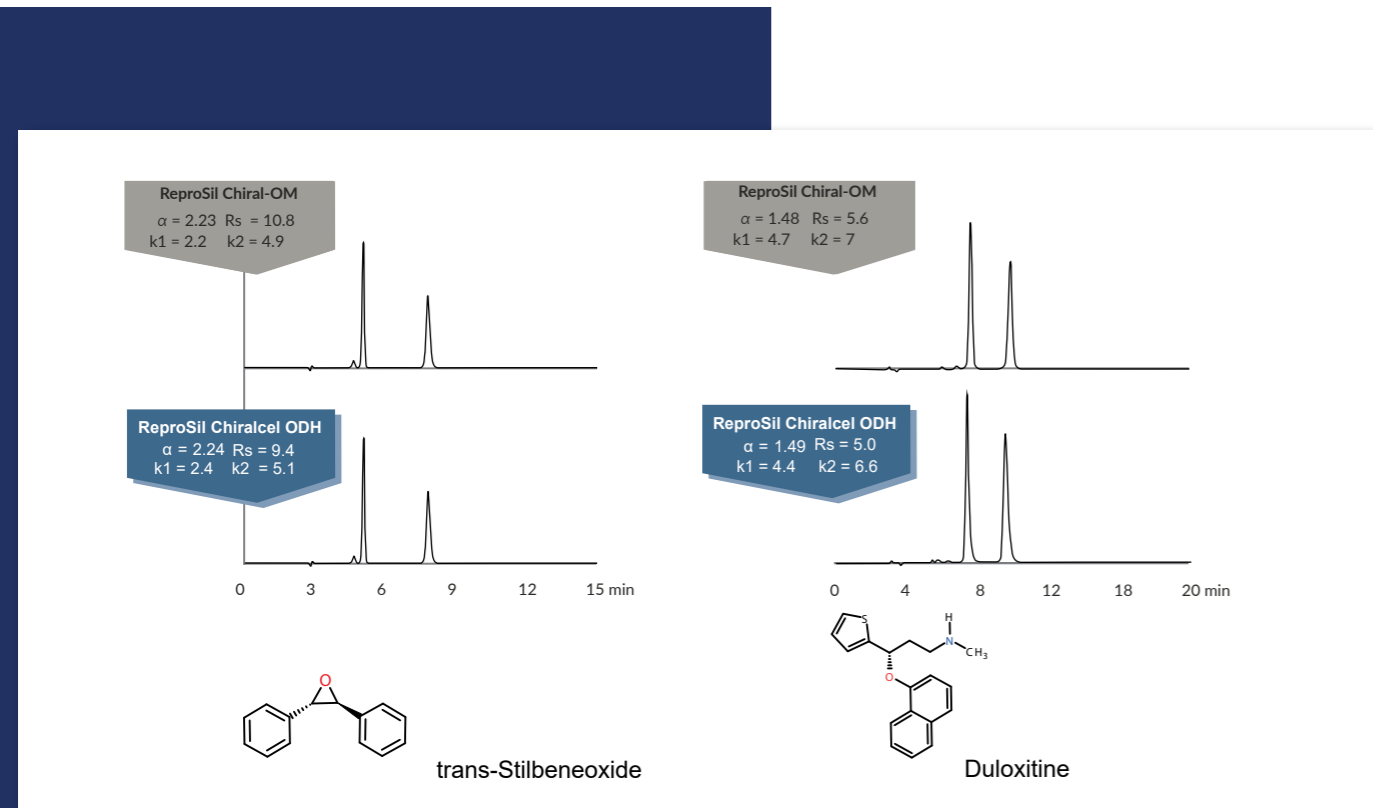
NO SEPARATION



SEPARATION



REPROSIL CHIRAL-OM & CHIRACEL ODH



CONCLUSION

Reprosil Chiral-OM is guaranteed replacement for Chiralcel-ODH HPLC columns.

OBSERVATION

01.

The selectivity is equivalent either the columns used in basic, neutral or acidic conditions.

02.

Resolution between isomer is higher for Reprosil Chiral-OM column when used in basic & neutral conditions where as in acidic condition Chiralcel ODH is showing slightly higher resolution.

03.

The peak symmetry is better for Reprosil Chiral-OM column in all three conditions (i.e. acidic, basic or neutral).

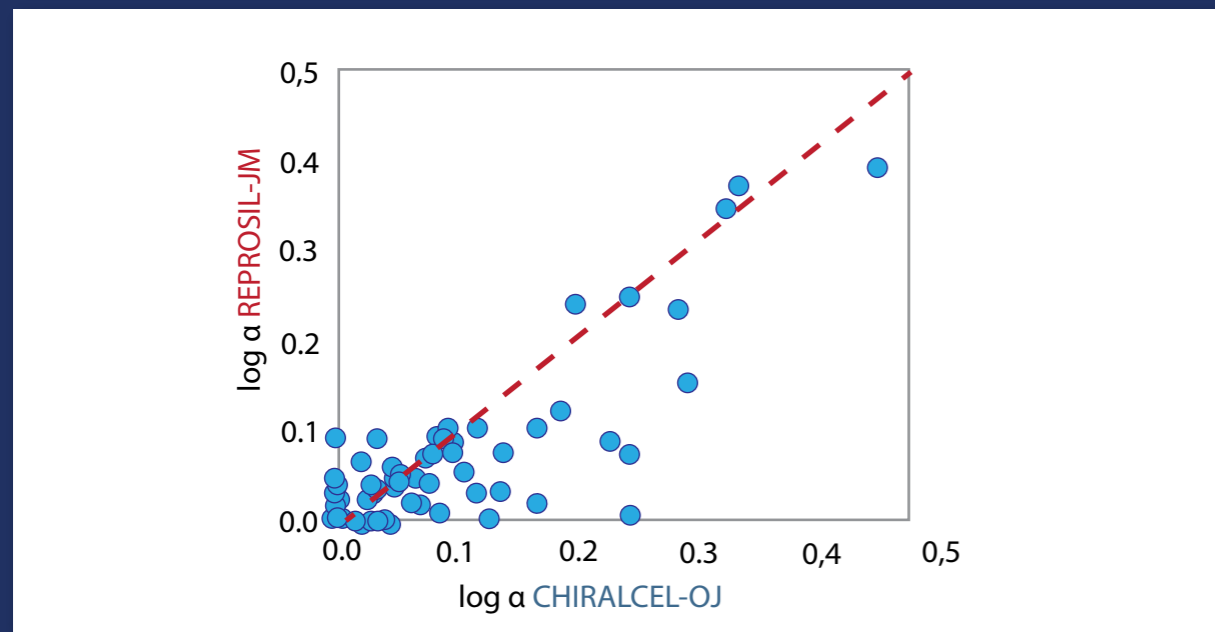
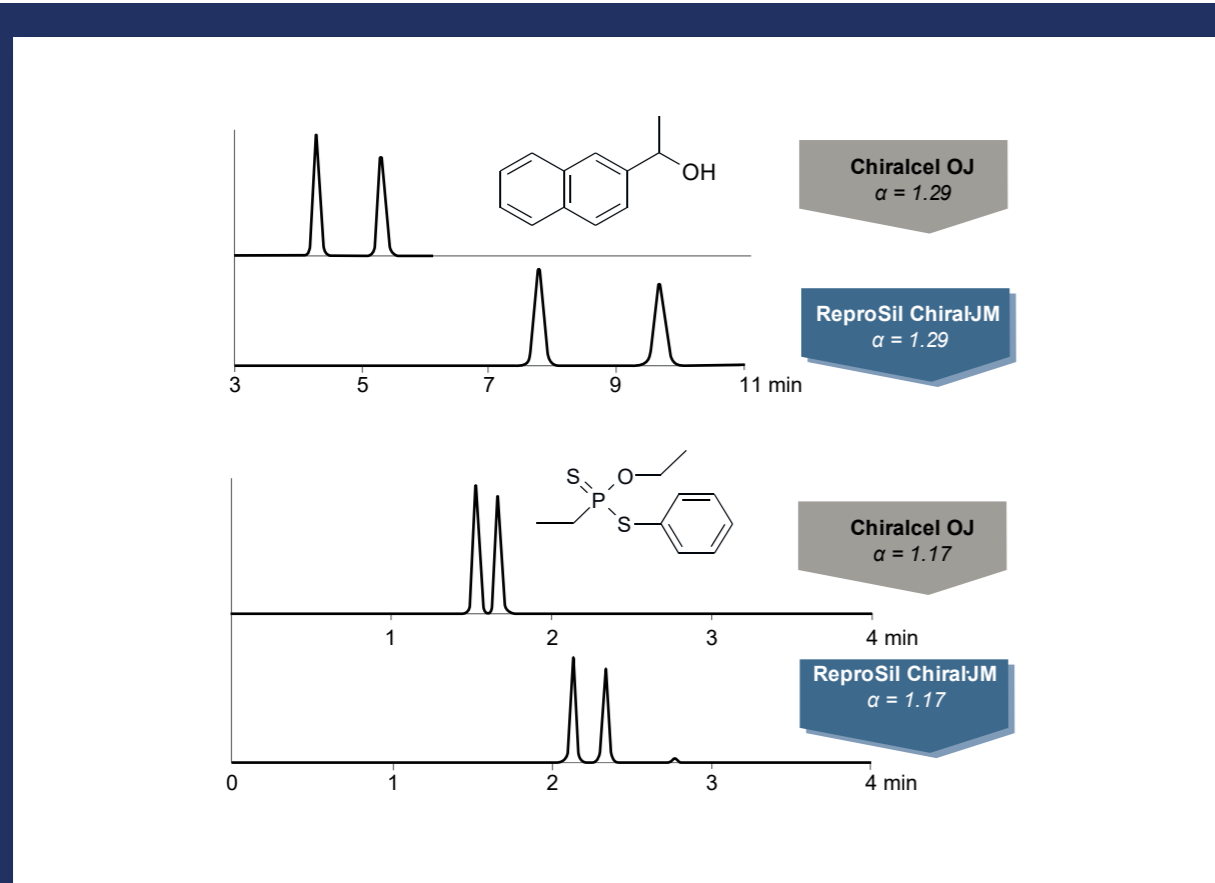
04.

With all the conditions Reprosil Chiral-OM is showing higher no. of theoretical plate.

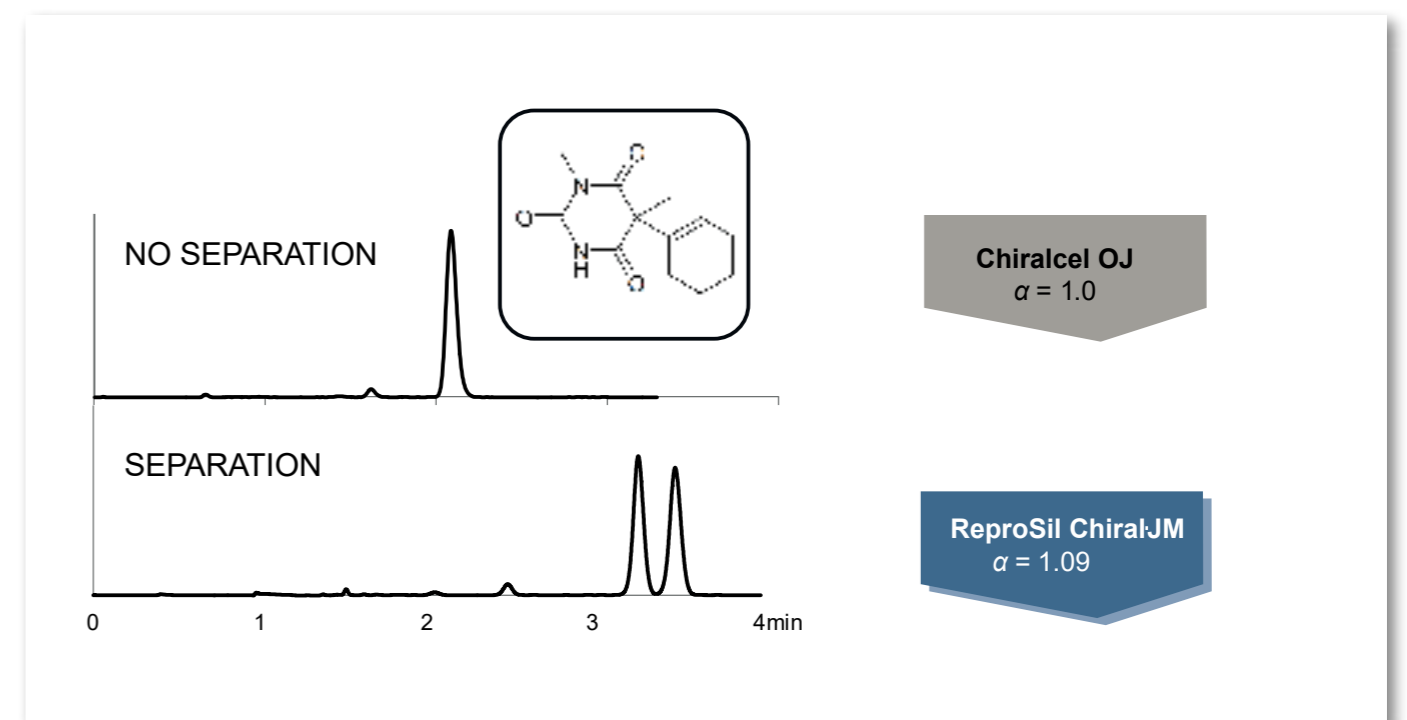
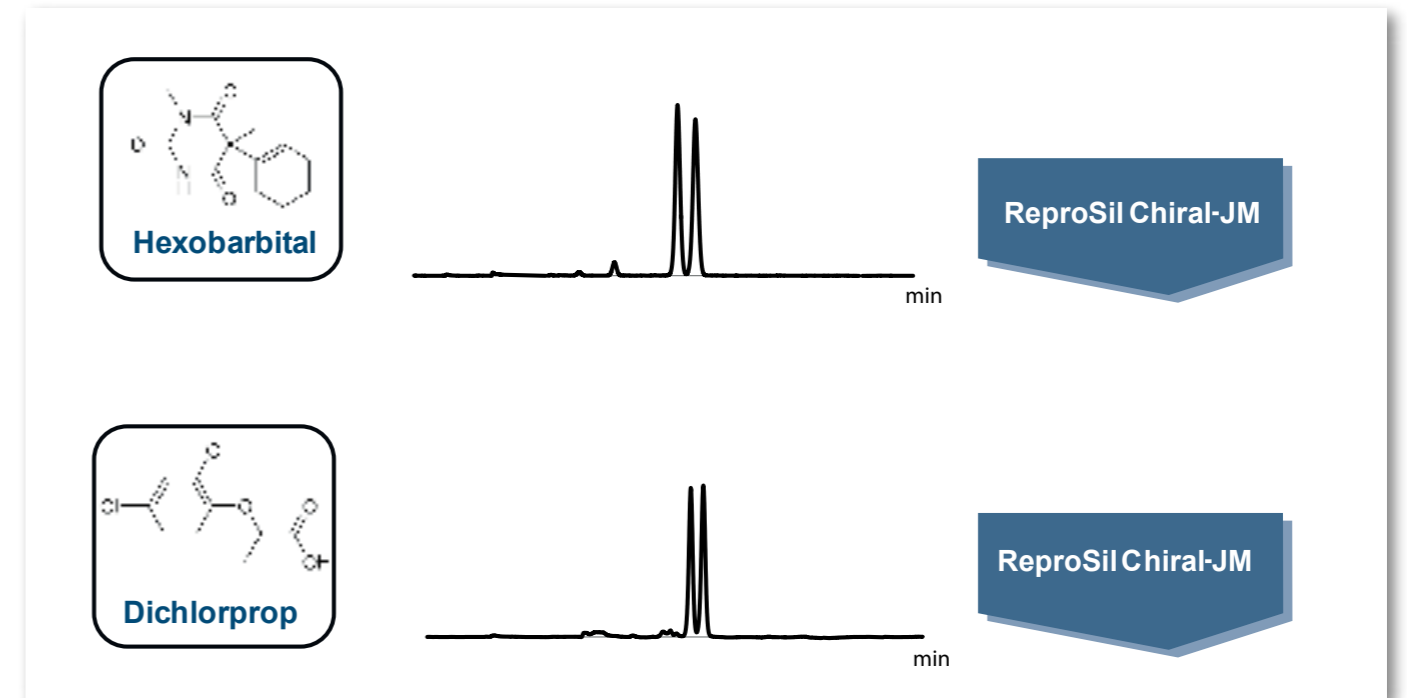
SELECTIVITY OF JM vs. OJ (USP-L80)

The log α - log α plot compares the selectivities ability of JM and OJ.

The data points located on the first bisector (red dotted line) show similar separation profiles. The chromatograms of 1-(2-Naphthyl)-ethanol and Fonofos illustrate chiral compounds with identical separation factors on both columns.



The analysis of Hexobarbital on ReproSil Chiral-JM provides a better starting point for a method development than those on Chiral-AM or Chiral-OM.



COMPARISON OF CHIRAL PHASES

ReproSil Chiral – unique immobilised phases

SAMPLES

Sample: Customer sample

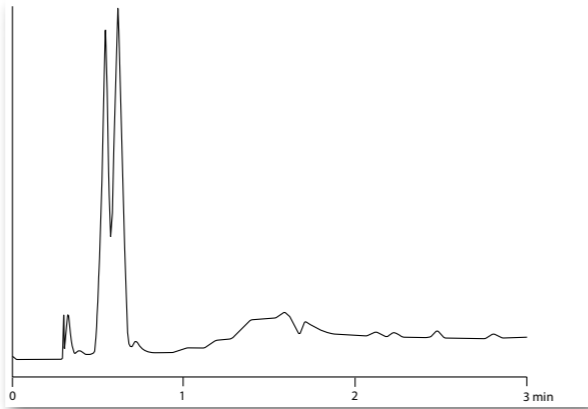
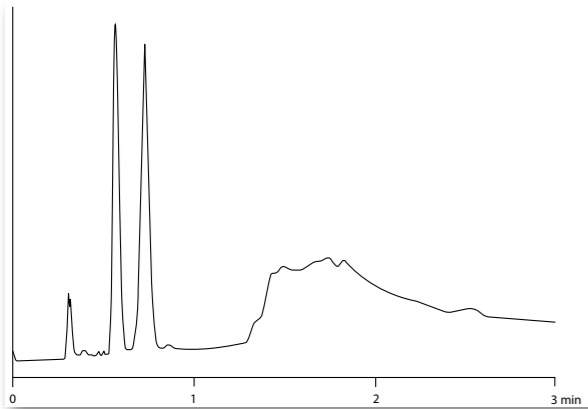
Eluent: CO₂/0 - 20% MeOH (0.1% DEA) in 2 min

ReproSil Chiral MIX

5 μm, 100 x 3.0 mm

Lux Cellulose-4

3 μm, 100 x 4.6 mm



| | RT | Areas | %Areas | Resolutions | USP Tailing |
|---|-------|--------|--------|-------------|-------------|
| 1 | 0,564 | 220320 | 39,72 | | 1,20 |
| 2 | 0,726 | 334417 | 60,28 | 2,26 | 1,04 |

| | RT | Areas | %Areas | Resolutions | USP Tailing |
|---|-------|--------|--------|-------------|-------------|
| 1 | 0,547 | 647055 | 44,58 | | |
| 2 | 0,626 | 804384 | 55,42 | 0,97 | |

Sample: TSO

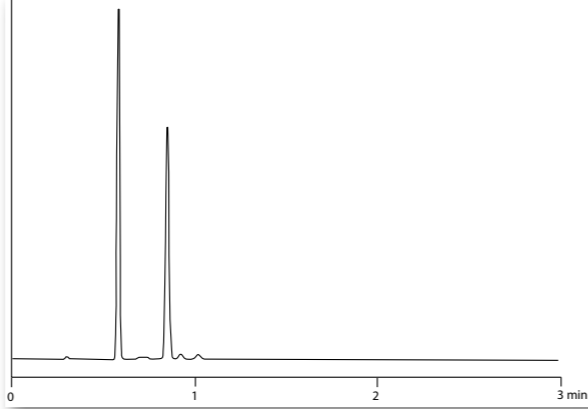
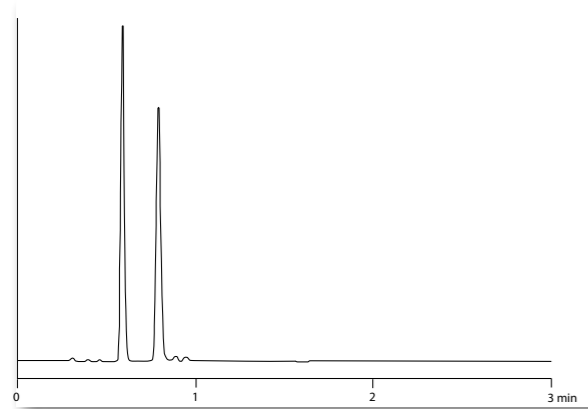
Eluent: CO₂/ 10% MeOH (0.1% DEA)

ReproSil Chiral MIX

5 μm, 100 x 3.0 mm

Lux Cellulose-4

3 μm, 100 x 4.6 mm



| | RT | Areas | %Areas | Resolutions | USP Tailing |
|---|-------|---------|--------|-------------|-------------|
| 1 | 0,588 | 1970619 | 49,64 | | 1,13 |
| 2 | 0,789 | 1999432 | 50,36 | 4,97 | 1,11 |

| | RT | Areas | %Areas | Resolutions | USP Tailing |
|---|-------|---------|--------|-------------|-------------|
| 1 | 0,583 | 1038369 | 49,91 | | 1,05 |
| 2 | 0,851 | 1041945 | 50,09 | 8,89 | 1,04 |

COMPARISON OF CHIRAL PHASES

ReproSil Chiral – unique immobilised phases

SAMPLES

Sample: Customer sample

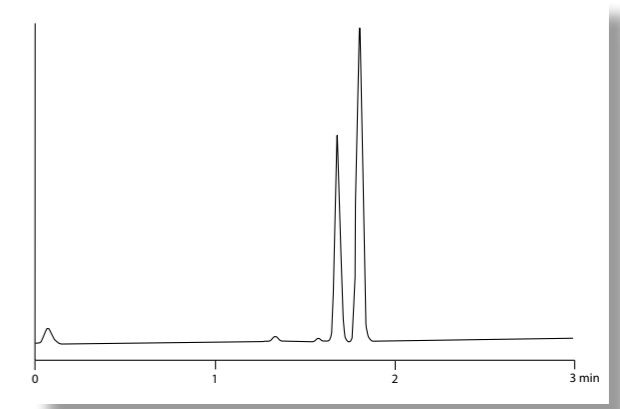
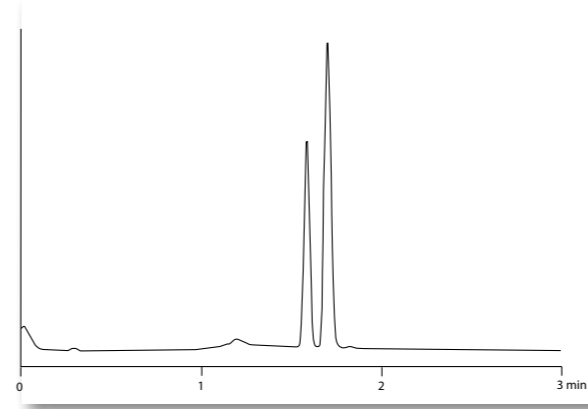
Eluent: CO₂/ 10-50% MeOH (0.1% DEA) in 2 min, hold until 5 min

ReproSil Chiral MIZ

3 μm, 100 x 3.0 mm

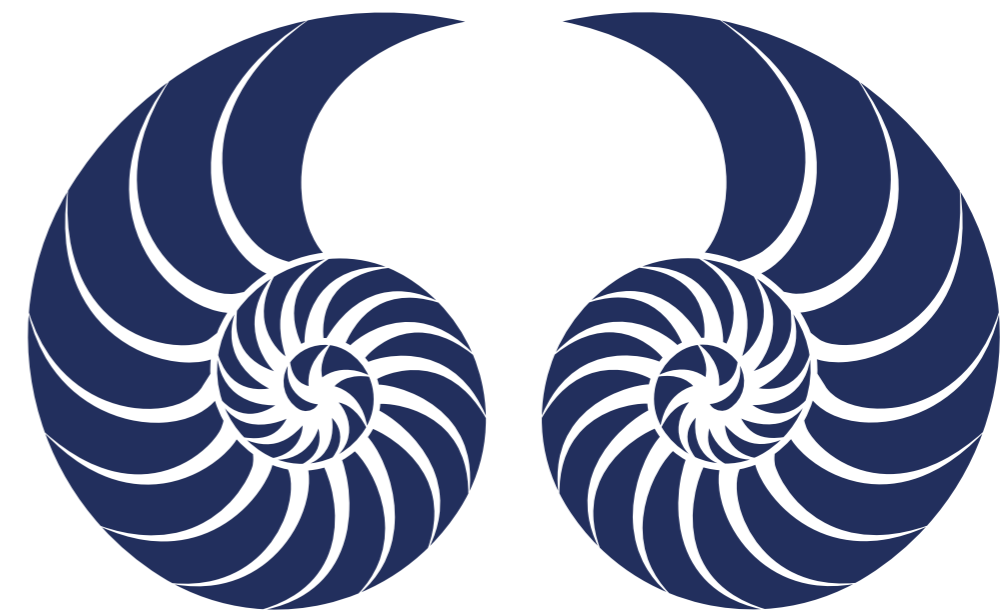
Lux Cellulose-2

3 μm, 50 x 4.6 mm



| | RT | Areas | %Areas | Resolutions | USP Tailing |
|---|-------|---------|--------|-------------|-------------|
| 1 | 1,585 | 1872263 | 36,75 | | 1,06 |
| 2 | 1,699 | 3221889 | 36,25 | 1,77 | 1,09 |

| | RT | Areas | %Areas | Resolutions | USP Tailing |
|---|-------|---------|--------|-------------|-------------|
| 1 | 1,678 | 1757077 | 36,89 | | 1,05 |
| 2 | 1,801 | 3005764 | 63,11 | 2,00 | 1,06 |



www.dr-maisch.com

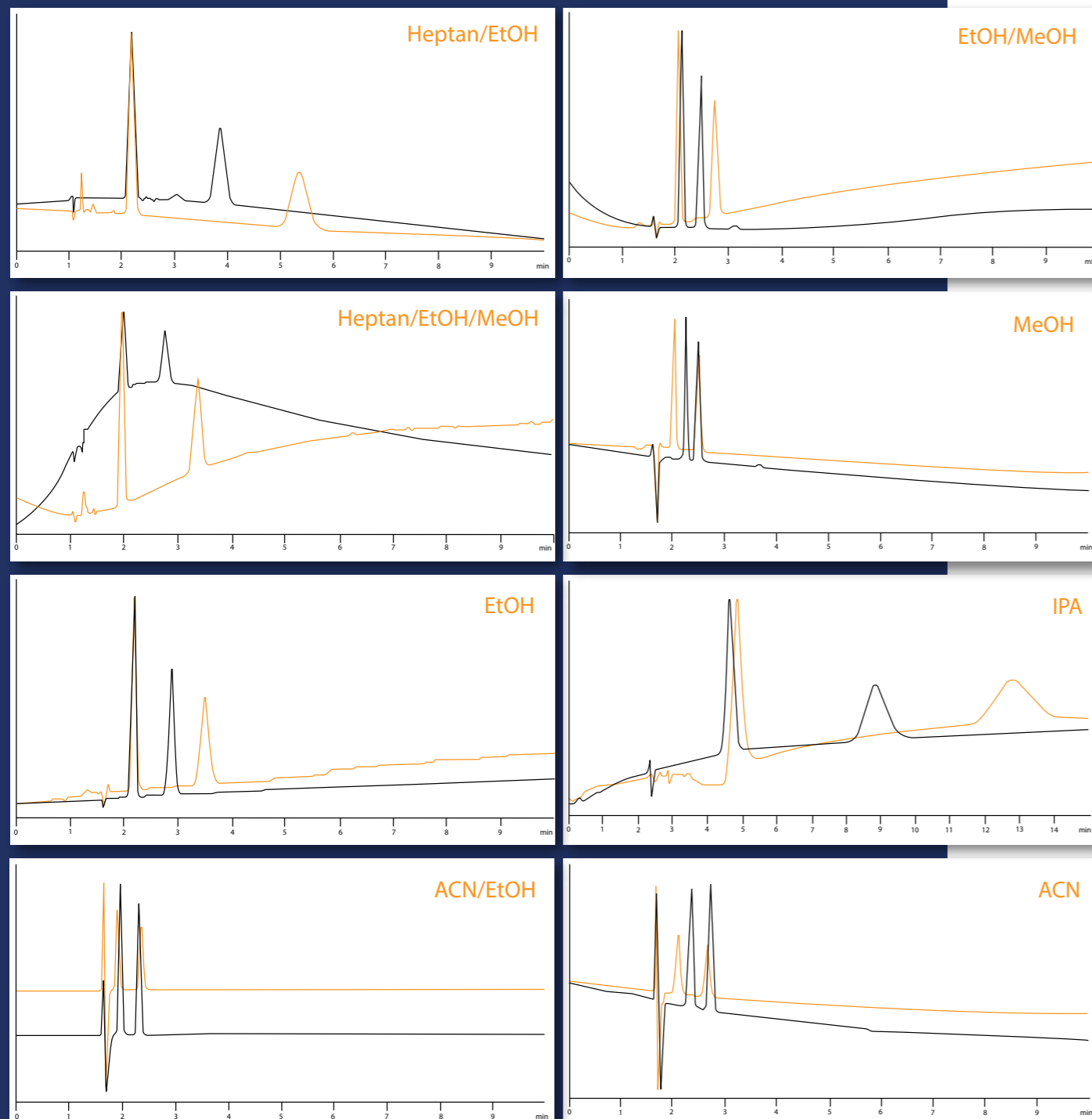
ReproSil Chiral MIX vs. Lux Cellulose-4 under NP/PO conditions

Customer sample

No additives used

Black: Lux Cellulose 4

Colour: **ReproSil Chiral-MIX**



Normal Phase

- Mixtures of hexane or heptane with alcohols (EtOH, IPA) = 80:20 (vary % alcohol to adjust retention time and selectivity)
- Add 0.1 – 0.5% DEA or TEA for basic analytes and 0.1 – 0.5 % TFA or AcOH for acidic analytes

Polar Organic Phase

- Mixtures of ACN / IPA (95/5) or MeOH / IPA (90/10) or neat ACN
- Add 0.1 – 0.5% DEA or TEA for basic analytes and 0.1 – 0.5 % TFA or AcOH for acidic analytes

Reversed Phase

- ACN or MeOH or EtOH / water mixtures
- Water content must be < 85%
- Add 0.5 – 1 N perchlorate or 0.1% TFA for basic compounds and HClO₄/NaClO₄ buffer for acidic compounds together with ACN
- Use dedicated column for reversed phase conditions because solvent switch is tedious

Solvent compatibility of coated phases

As the polysaccharide layer is not chemically bonded to the silica support but physically adsorbed, strong solvents have the ability to strip the polymer off the silica support and have therefore to be avoided even in trace amounts or as an injection solvent. Such strong solvents include:

- Ethers incl. THF
- Acetone
- Chlorinated solvents
- Ethyl acetate
- DMSO
- DMF
- Toluene
- Ketones
- Dimethylacetamid
- IPA > 50%

With immobilised phases an extended range of organic solvents can be used as injection solvents and eluents.

Recommended temperature range: 0 – 40°C

Recommended max. pressure: 150 bar

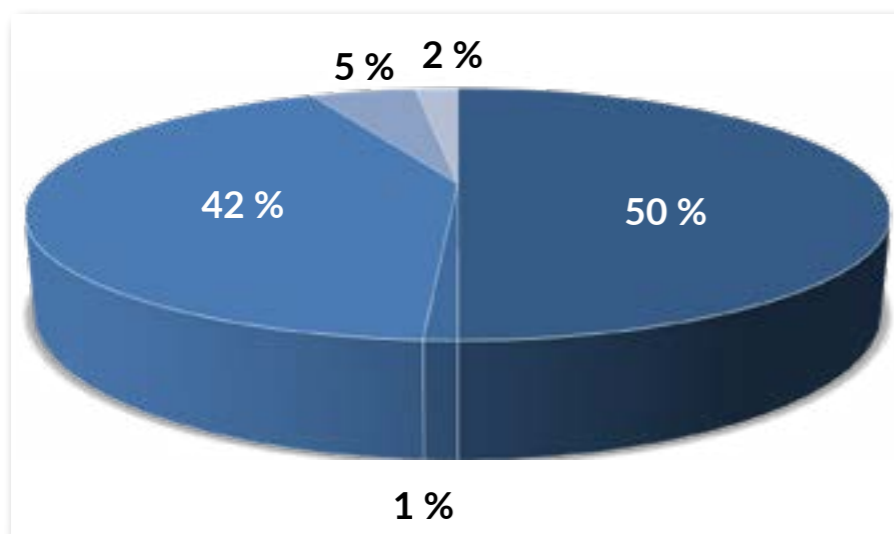
REPROSIL CHIRAL NR- UNIQUE CHEMICALLY BONDED PHASE

- Immobilised brush-type phase
- Dinitro compound, acceptor and electron donor phase
- Particularly useful for aromatic compounds with O or N near chiral centre
- NR, RP, SFC mode
- Both antipodes of chiral selector available - elution order reversible

Why ReproSil Chiral-NR?

- switch from NP to RP within minutes
- In all common HPLC eluents chemically stable
- amenable to various separation modes and solvents
- scalable
- complementary selectivity
- elution order reversible

CHIRAL PREPARATIVE SEPARATIONS WITH HPLC BY HOFFMANN LA ROCHE, BASEL IN 2014

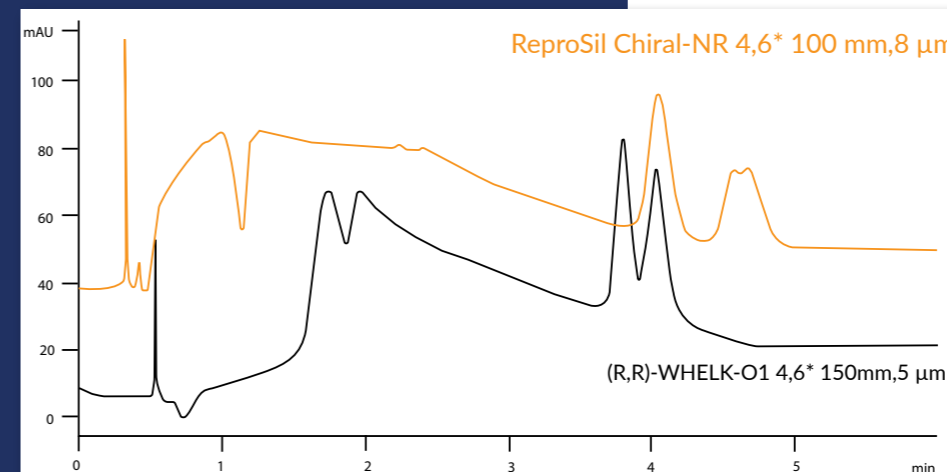


- ReproSil Chiral-NR (50%)
- Chiralcel OD (1%)
- Chiralpak AD (42%)
- Lux-2 Amylose (5%)
- Lux-2 Cellulose (2%)

COMPARISON OF REPROSIL CHIRAL NR VS. WHELK-O-1 IN SFC MODE

ReproSil Chiral NR vs. Whelk-O1

COMPARISON



Co-Solvent:
MeOH(0.1%DEA)

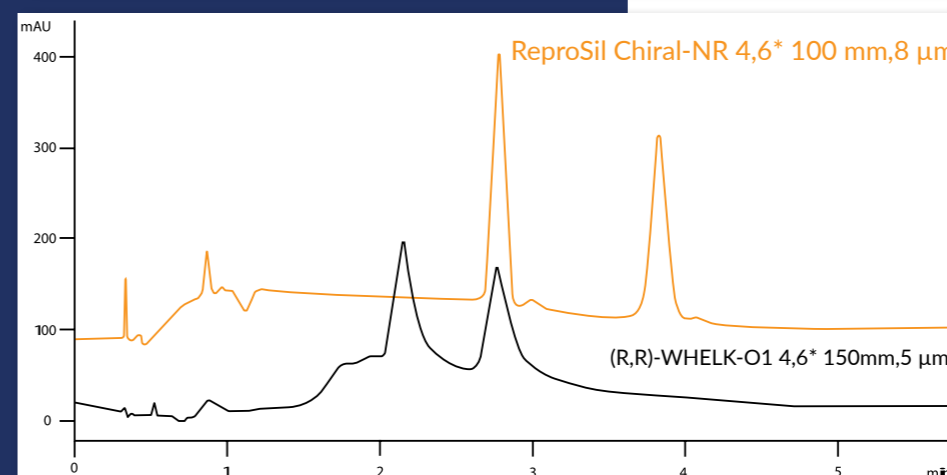
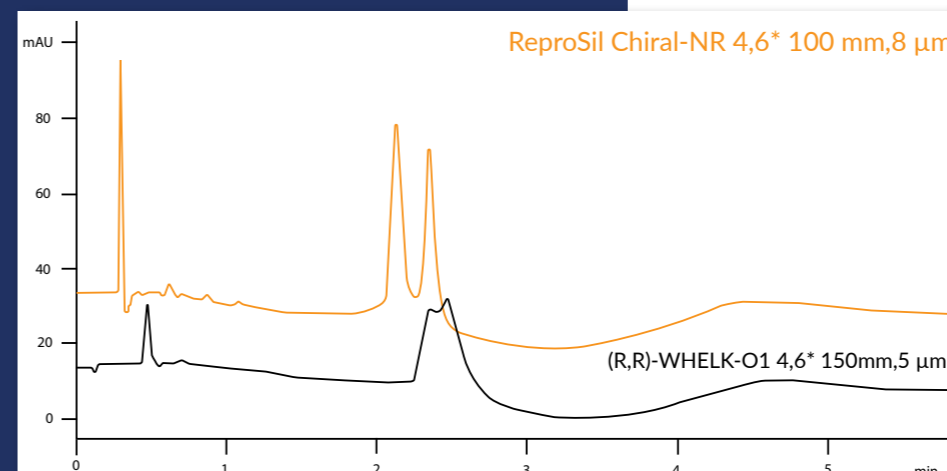
Gradient (B%):
10% to 50% in 2.0 min.
hold 1.0 min at 50%

Temperature: 35°C

Flow (ml/min): 4

Back Pressure(psi):
1500.00

Detector: 220nm

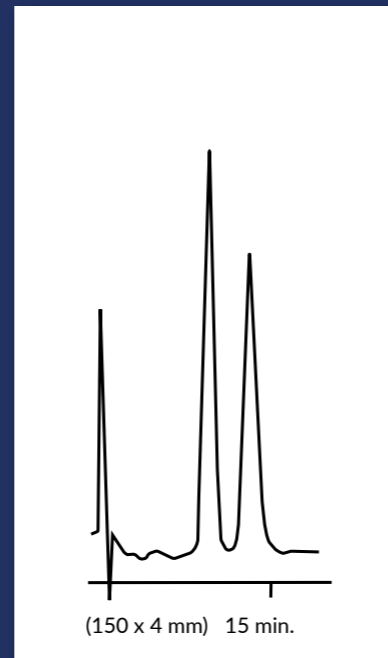
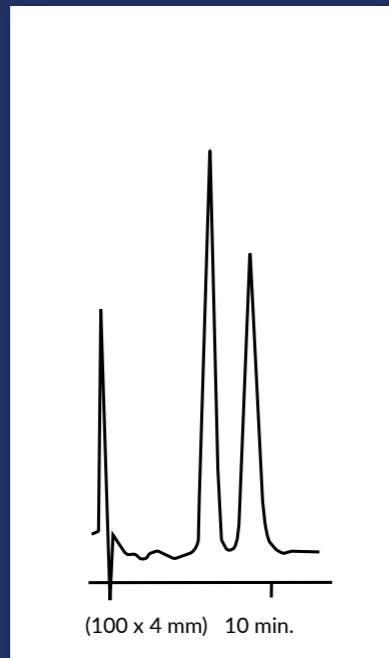
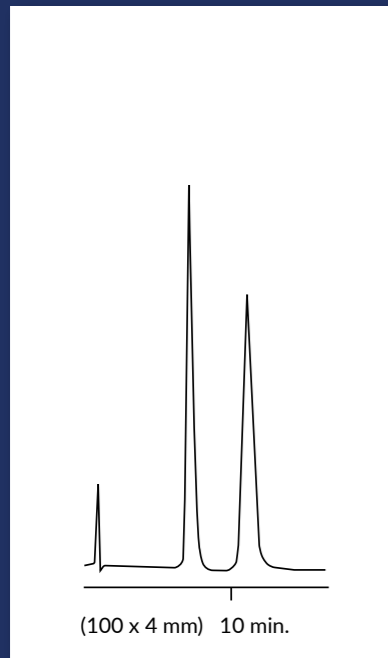


www.dr-maisch.com

CHIRAL SEPARATION OF IBUPROFEN, WARFARIN AND VERAPAMIL

ReproSil Chiral-AGP, 5 μm

ELUENTS



Ibuprofen

100 mM
Na-phosphate buffer, pH7

Warfarin

10% -Propanol in 10 mM
Na-phosphate buffer, pH7

Verapamil

12% ACN in 10 mM
Na-phosphate buffer, pH7

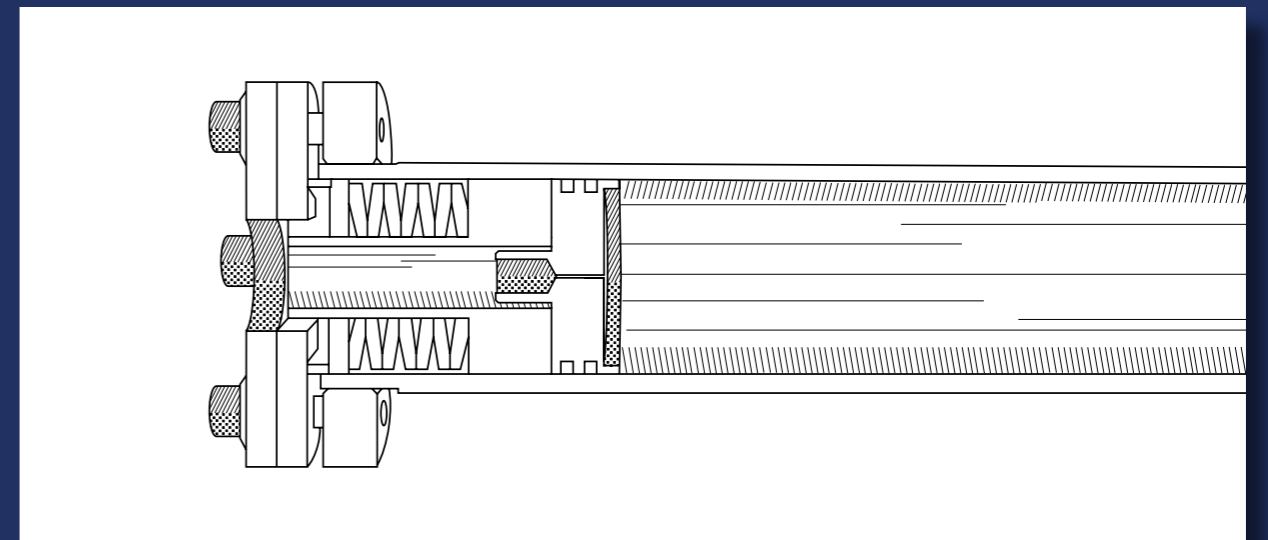
LOGLIFE PREPARATIVE CHROMATOGRAPHY COLUMN HARDWARE

Technology patented by
Dr. Maisch HPLC

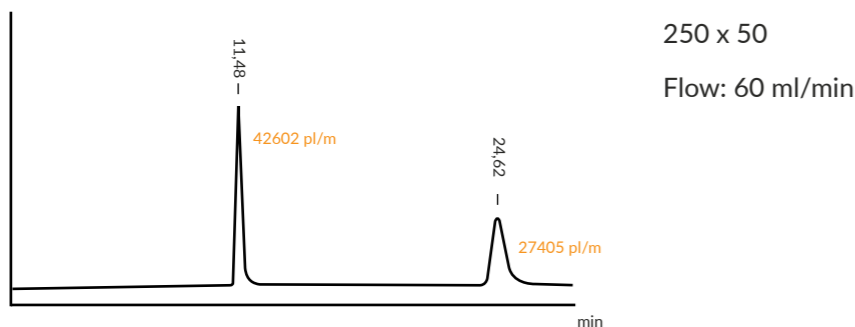
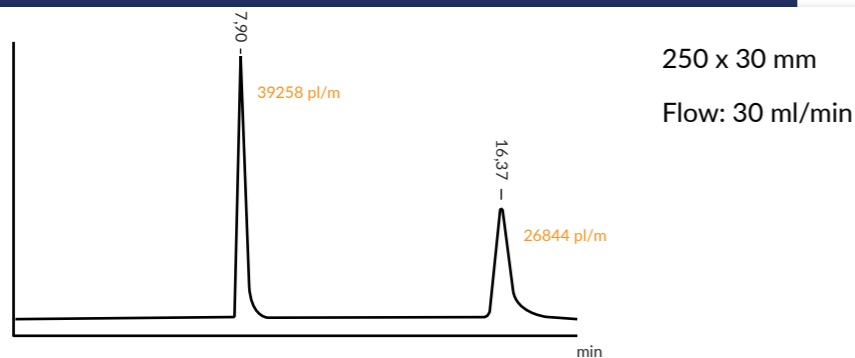
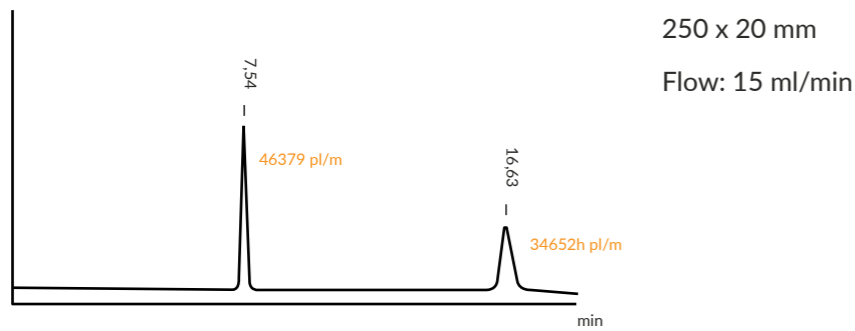
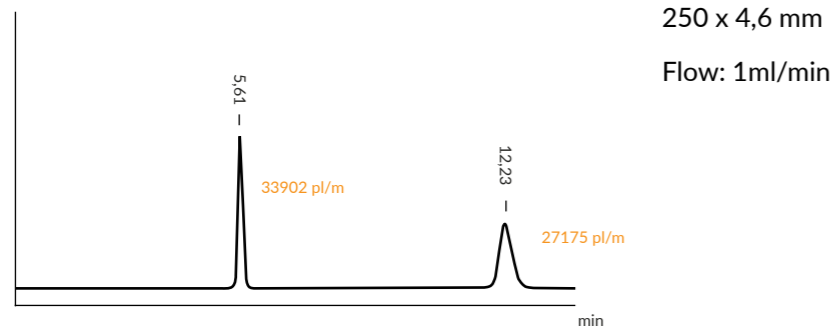
LOGLIFE

THE ONLY PREPACKED COLUMN ON THE MARKET
WITH INTEGRATED DYNAMIC AXIAL
COMPRESSION MECHANISM

Available column IDs: 25 mm, 30 mm, 40 mm, 50 mm, 70 mm



ReproSil Chiral-NR, 8 µm upscaling



TEST CONDITIONS

Mobile Phase:
Heptane/IPA 85/15
Temperature: Ambient
Pressure: 15 bar
Detector: UV @ 229 nm
Sensitivity: 0,1 mV

Mobile Phase:
Heptane/IPA 85/15
Temperature: Ambient
Pressure: 9 bar
Detector: UV @ 254 nm
Sensitivity: 0,0 mV

Mobile Phase:
Heptane/IPA 85/15
Temperature: Ambient
Pressure: 11 bar
Detector: UV @ 254 nm
Sensitivity: -0,8 mV

Mobile Phase:
Heptane/IPA 85/15
Temperature: Ambient
Pressure: 12 bar
Detector: UV @ 254 nm
Sensitivity: -0,3 mV

Exemplary columns are mentioned below.

Columns with ID of: 4.0 mm, 3.0 mm and 2.0 mm are also available.

Immobilized Amylose-Phases

| | | | |
|--|---|--------------|-------------------------------|
| ReproSil Chiral-MIA Chiral-MIA, 5 µm (or ReproSil Chiral-MIA-R) | Amylose tris-(3,5-dimethylphenyl) carbamate (Alternative to Daicel IA) 250 x 4.6 mm | 150 x 4.6 mm | (PN: r65.mia) 100 x 4.6 mm |
| ReproSil Chiral-MIF Chiral-MIF, 5 µm (or ReproSil Chiral-MIF-R) | Amylose tris-(3-Chloro-4-Methylphenyl) carbamate (Alternative to Daicel IF) 250 x 4.6 mm | 150 x 4.6 mm | (PN: r65.mif) 100 x 4.6 mm |
| ReproSil Chiral-MID Chiral-MID, 5 µm (or ReproSil Chiral-MID-R) | Amylose tris-(3-Chlorophenyl) carbamate (Alternative to Daicel ID) 250 x 4.6 mm | 150 x 4.6 mm | (PN: r65.mid) 100 x 4.6 mm |

Immobilized Cellulose-Phases

| | | | |
|---|---|-----------------------------|--|
| ReproSil Chiral-MIB ReproSil Chiral-MIB, 5 µm (or ReproSil Chiral-MIB-R) | Cellulose tris-(3,5-dimethylphenyl) carbamate (Alternative to Daicel IB) 250 x 4.6 mm | 150 x 4.6 mm | |
| ReproSil Chiral-MIC ReproSil Chiral-MIC, 5 µm (or ReproSil Chiral-MIC-R) | Cellulose tris-(3,5-Dichlorophenyl) carbamate (Alternative to Daicel IC) 250 x 4.6 mm 250 x 10 mm | 150 x 4.6 mm 250 x 20 mm | (PN: r65.mic) 100 x 4.6 mm |
| ReproSil Chiral-MIC, 3 µm (or ReproSil Chiral-MIC-R) | (Alternative to Daicel IC-3) 250 x 4.6 mm 100 x 4.6 mm | 150 x 4.6 mm 50 x 4.6 mm | (PN: r63.mic) 125 x 4.6 mm 33 x 4.6 mm |
| ReproSil Chiral-MIX ReproSil Chiral-MIC, 5 µm (or ReproSil Chiral-MIX-R) | Cellulose tris-(4-Chlor-3-Methylphenyl) carbamate 250 x 4.6 mm | 150 x 4.6 mm | (PN: r65.mix) 100 x 4.6 mm |
| ReproSil Chiral-MIZ ReproSil Chiral-MIZ, 5 µm (or ReproSil Chiral-MIZ-R) | Cellulose tris-(3-Chlor-4-methylphenyl) carbamate 250 x 4.6 mm | 150 x 4.6 mm | (PN: r65.miz) 100 x 4.6 mm |
| ReproSil Chiral-MIZ, 3 µm (or ReproSil Chiral-MIZ-R) | 250 x 4.6 mm 100 x 4.6 mm | 150 x 4.6 mm 50 x 4.6 mm | (PN: r63.miz) 125 x 4.6 mm 33 x 4.6 mm |

CHIRAL COLUMNS

| | | | |
|---|--|---------------|--------------|
| ReproSil Chiral-MOF | Cellulose tris-(4-Chlorophenyl) carbamate | | |
| ReproSil Chiral-MOF, 5 µm (or ReproSil Chiral-MOF-R) | 250 x 4.6 mm 150 x 4.6 mm | (PN: r65.mof) | 100 x 4.6 mm |

Coated Cellulose Phases

| | | | |
|---|---|--------------|--|
| ReproSil Chiral-OM | USP-L40, Cellulose tris-(3,5-dimethylphenyl-carbamate) mod. Silica | | |
| ReproSil Chiral-OM, 3 µm / ReproSil Chiral-OM-R, 3 µm | Alternatives to Daicel OD-3 / OD-3R | | |
| 250 x 4.6 mm | 150 x 4.6 mm | 125 x 4.6 mm | |
| 100 x 4.6 mm | 50 x 4.6 mm | 33 x 4.6 mm | |
| ReproSil Chiral-OM, 5 µm / ReproSil Chiral-OM-R, 5 µm | Alternative to Daicel OD-H / OD-RH | | |
| 250 x 4.6 mm | 150 x 4.6 mm | 100 x 4.6 mm | |
| 250 x 10 mm | 250 x 20 mm | | |
| ReproSil Chiral-OM, 10 µm / ReproSil Chiral-OM-R, 10 µm | Alternatives to Daicel OD / OD-R | | |
| 250 x 4.6 mm | 150 x 4.6 mm | 100 x 4.6 mm | |
| 250 x 10 mm | 250 x 20 mm | | |
| ReproSil Chiral-OM, 20 µm / ReproSil Chiral-OMR, 20 µm | Alternative to Daicel OD / OD-R | | |
| 250 x 4.6 mm | 150 x 4.6 mm | 100 x 4.6 mm | |
| 250 x 10 mm | 250 x 20 mm | | |

| | | | |
|---------------------------|---|--------------|--------------|
| ReproSil Chiral-CM | USP-L70 (Tris-(Phenylcarbamate)-Cellulose mod. Silica) | | |
| ReproSil Chiral-CM, 3 µm | Alternative to Daicel OC-3 | 150 x 4.6 mm | (PN: r63.cm) |
| | 250 x 4.6 mm | | 100 x 4.6 mm |

| | | | |
|--------------------------|----------------------------|--------------|--------------|
| ReproSil Chiral-CM, 5 µm | Alternative to Daicel OC-H | 150 x 4.6 mm | (PN: r65.cm) |
| | 250 x 4.6 mm | | 100 x 4.6 mm |
| | 250 x 10 mm | | |

| | | | |
|--|---|--------------|------------------------------|
| ReproSil Chiral-JM | USP-L80 (Tris-(4-Methylbenzoyl)-Cellulose mod. Silica) | | |
| | Alternative to Daicel OJ-3 / OJ-3R | | |
| ReproSil Chiral-JM, 3 µm (or ReproSil Chiral-JM-R) | 250 x 4.6 mm | 150 x 4.6 mm | (PN: r63.jm) 100 x 4.6 mm |
| | Alternative to Daicel OJ-H / OJ-HR | | |
| ReproSil Chiral-JM, 5 µm (or ReproSil Chiral-JM-R) | 250 x 4.6 mm | 150 x 4.6 mm | (PN: r65.jm) 100 x 4.6 mm |
| | 250 x 10 mm | | |
| | Alternative to Daicel OJ / OJR | | |
| ReproSil Chiral-JM, 10 µm (or ReproSil Chiral-JM-R) | 250 x 4.6 mm | 150 x 4.6 mm | (PN: r60.jm) 100 x 4.6 mm |
| | 250 x 10 mm | | |

CHIRAL COLUMNS

| | | | |
|---|--|--------------|--------------|
| ReproSil Chiral- ZM | Cellulose tris-3-Chloro-4-Methylphenylcarbamate mod. Silica | | |
| | Alternative to Daicel OZ-3 / OZ-3H | | (PN: r63.zm) |
| ReproSil Chiral-ZM, 3 µm (or ReproSil Chiral-ZM-R) | 250 x 4.6 mm | 150 x 4.6 mm | 125 x 4.6 mm |
| | 100 x 4.6 mm | 50 x 4.6 mm | 33 x 4.6 mm |

| | | | |
|---|----------------------------|--------------|--------------|
| | Alternative to Daicel OZ-H | | (PN: r65.zm) |
| ReproSil Chiral-ZM, 5 µm (or ReproSil Chiral-ZM-R) | 250 x 4.6 mm | 150 x 4.6 mm | 100 x 4.6 mm |
| | 250 x 10 mm | 250 x 20 mm | |

| | | | |
|---|---|--------------|--------------|
| ReproSil Chiral-BM | Tris-(Benzoyl)-Cellulose mod. Silica | | |
| | Alternatives to Daicel OB-H / OB-RH | | |
| ReproSil Chiral-BM, 5 µm / ReproSil Chiral-BM-R | 250 x 4.6 mm | 150 x 4.6 mm | 100 x 4.6 mm |
| | 250 x 10 mm | | |
| | Alternatives to Daicel OB / OB-R | | |
| ReproSil Chiral-BM, 10 µm / ReproSil Chiral-BM-R | 250 x 4.6 mm | 150 x 4.6 mm | 100 x 4.6 mm |
| | 250 x 10 mm | | |

Coated Amylose Phases

| | | | |
|---|--|--------------|--|
| ReproSil Chiral-AM | USP-L51, Amylose tris-3,5-dimethylphenylcarbamate mod. Silica | | |
| ReproSil Chiral-AM, 3 µm / ReproSil Chiral-AM-R, 3 µm | Alternative to Daicel AD-3 / AD-3R | | |
| 250 x 4.6 mm | 150 x 4.6 mm | 125 x 4.6 mm | |
| 100 x 4.6 mm | 50 x 4.6 mm | 33 x 4.6 mm | |
| ReproSil Chiral-AM, 5 µm / ReproSil Chiral-AM-R, 5 µm | Alternatives to Daicel AD-H / AD-RH | | |
| 250 x 4.6 mm | 150 x 4.6 mm | 100 x 4.6 mm | |
| 250 x 10 mm | 250 x 20 mm | | |
| ReproSil Chiral-AM, 10 µm / ReproSil Chiral-AM-R, 10 µm | Alternatives to Daicel AD / AD-R | | |
| 250 x 4.6 mm | 150 x 4.6 mm | 100 x 4.6 mm | |
| 250 x 10 mm | 250 x 20 mm | | |
| ReproSil Chiral-AM, 20 µm / ReproSil Chiral-AM-R, 20 µm | Alternatives to Daicel AD / AD-R | | |
| 250 x 4.6 mm | 150 x 4.6 mm | 100 x 4.6 mm | |
| 250 x 10 mm | 250 x 20 mm | | |

ReproSil Chiral-AMS

Amylose tris-(S)- α -Methylbenzyl-Carbamate

ReproSil Chiral-AMS, 3 μ m / ReproSil Chiral-AMS-R, 3 μ m Alternatives to Daicel AS-3 / AS-3R

| | | |
|--------------|--------------|--------------|
| 250 x 4.6 mm | 150 x 4.6 mm | 125 x 4.6 mm |
| 100 x 4.6 mm | 50 x 4.6 mm | 33 x 4.6 mm |

ReproSil Chiral-AMS, 5 μ m / ReproSil Chiral-AMS-R, 5 μ m Alternatives to Daicel AS-H / AS-RH

| | | |
|--------------|--------------|--------------|
| 250 x 4.6 mm | 150 x 4.6 mm | 100 x 4.6 mm |
| 250 x 10 mm | | |

ReproSil Chiral-AMS, 10 μ m / ReproSil Chiral-AMS-R, 10 μ m Alternatives to Daicel AS / AS-R

| | | |
|--------------|--------------|--------------|
| 250 x 4.6 mm | 150 x 4.6 mm | 100 x 4.6 mm |
| 250 x 10 mm | | |

ReproSil Chiral-ZA

Amylose tris-3-Chloro-4-Methylphenylcarbamate mod. Silica

ReproSil Chiral-ZA, 3 μ m (or ReproSil Chiral-ZA-R) Alternative to Daicel AZ-3 / AZ-3R (PN: r63.za)

| | | |
|--------------|--------------|--------------|
| 250 x 4.6 mm | 150 x 4.6 mm | 125 x 4.6 mm |
| 100 x 4.6 mm | 50 x 4.6 mm | 33 x 4.6 mm |

ReproSil Chiral-ZA, 5 μ m (or ReproSil Chiral-ZA-R) Alternative to Daicel AZ-H / AZ-HR (PN: r65.za)

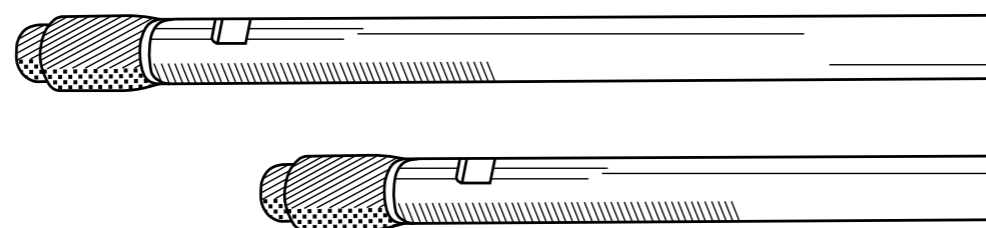
| | | |
|--------------|--------------|--------------|
| 250 x 4.6 mm | 150 x 4.6 mm | 100 x 4.6 mm |
| 250 x 10 mm | 250 x 20 mm | |

ReproSil Chiral-YM

Amylose tris-5-Chloro-2-Methylphenylcarbamate mod. Silica

ReproSil Chiral-YM, 3 μ m (or ReproSil Chiral-YM-R) Alternatives to Daicel AY-3 / AY-3R (PN: r63.ym)

| | | |
|--------------|--------------|--------------|
| 250 x 4.6 mm | 150 x 4.6 mm | 125 x 4.6 mm |
| 100 x 4.6 mm | 50 x 4.6 mm | 33 x 4.6 mm |



ReproSil Chiral-NR

Immobilized brush-type phases, Dinitro-compounds. π -electron acceptor / π -electron donor phase. Particularly for aromatic compounds with O or N near chiral-centre. Chiral separations in NP and RP-Modus

| | | | |
|------------|---------------|--------------|-------------|
| 5 μ m | (PN: r15.nr) | 250 x 4.6 mm | |
| | | 150 x 4.6 mm | |
| | | 100 x 4.6 mm | |
| 8 μ m | (PN: r18.nr) | 250 x 4.6 mm | 250 x 10 mm |
| 12 μ m | (PN: r112.nr) | 150 x 4.6 mm | 250 x 20 mm |
| 15 μ m | (PN: r115.nr) | 100 x 4.6 mm | |

ReproSil Chiral-NR-R

Reversed Elution order compared to ReproSil Chiral-NR / Antipode of Chiral-NR

| | | |
|---------------|--------------|-------------|
| (PN: r18.nr) | 250 x 4.6 mm | 250 x 10 mm |
| | 150 x 4.6 mm | |
| (PN: r112.nr) | 100 x 4.6 mm | 250 x 20 mm |

Other Chiral Phases

ReproSil Chiral-PS, 8 μ m

Chiral separations in NP and RP-Modus

(for aromatic compounds with S or P, for example: Sulfoxides, Phosphine Oxides, Phosphonates, Thiophosphine Oxides, Phosphin Selenides, Phosphine Boranes)

| | |
|--------------|--------------|
| 250 x 4.0 mm | (PN: r18.ps) |
|--------------|--------------|

ReproSil Chiral-OH, 8 μ m

Chiral separations in NP-Modus

(Aromatic Alcohols with OH near chiral centre, Aryl Carbinols)

| | |
|--------------|--------------|
| 250 x 4.0 mm | (PN: r18.oh) |
|--------------|--------------|

ReproSil Chiral-AA, 8 μ m

(for all amino acids, L-form elutes first)

| | |
|--------------|--------------|
| 250 x 4.0 mm | (PN: r18.aa) |
|--------------|--------------|

ReproSil Chiral-TAG, 8 μ m

Chiral separations in NP and RP-Modus

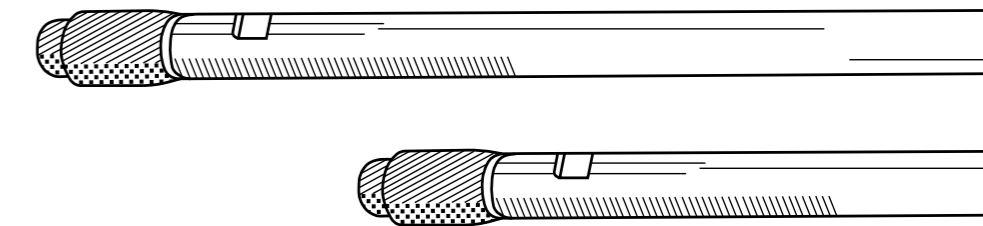
(Teicoplanin Aglycon: for Aminoalcohols, N-blocked amino acids, α -Hydroxy Acids, Oxazolidinons, Hydantoin, Imides, Amino Acids) USP-L63

| | |
|--------------|---------------|
| 250 x 4.0 mm | (PN: r18.tag) |
|--------------|---------------|

ReproSil Chiral-Beta-CD, 5 μ m

USP-L45 (Dansyl-Aminoacids, Barbiturates, Propranolol Sulfonamide, Prostaglandines)

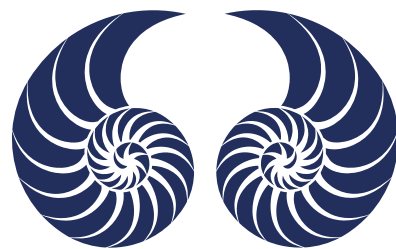
| | | | |
|---|--|---------------------------------|---------------------|
| ReproSil Chiral-Gamma-CD, 5 µm | 250 x 4.0 mm (PN: r15.gcd.s2504) | | |
| ReproSil Chiral-D-PhenylGlycin, 5 µm | USP-L36, N-(3,5-Dinitrobenzoyl)-D-Phenylglycin. (Herbicides + Pharmaca (Alcohols, Carbon. acids, Esters, Sulfoxides) Fenoprop-Methyl, Mecoprop-Methyl, Supidimid) 250 x 4.0 mm (PN: r15.DPG.s2504) 250 x 10 mm 250 x 20 mm | | |
| ReproSil Chiral-L-PhenylGlycin, 5 µm | USP-L36 N-(3,5-Dinitrobenzoyl)-L-Phenylglycin. Antipode to D-PhenylGlycin (Herbicides + Pharmaca (Alcohols, Carbon. Acids, Esters, Sulfoxides) Fenoprop-Methyl, Mecoprop-Methyl, Supidimid) 250 x 4.0 mm (PN: r15.LPG.s2504) | | |
| ReproSil Chiral-L-Leucin, 5 µm | N-(3,5-Dinitrobenzoyl)-L-Leucin 250 x 4.0 mm (PN: r15.LL.s2546) | | |
| ReproSil Chiral-L-Prolin, 5 µm | Davankov-Ligand exchange, Aminoacids, Hydantoine, Succinimide, Gluthetimide, Barbiturate, Sulfoxide 250 x 4.0 mm (PN: r15.pr.s2504) | | |
| ReproSil L-Hydroxy-Prolin, 5 µm | Alternative to Nucleosil Chiral-1, USP-L32 Ligand exchange, Eluent: 2-10 mM Coppersulfate, 20-60 C° (For DL-Atrolactinacid, DL-Mandelic acids, DL-Lactic acid, DL-Asparagin, DL-Serin, DL-Phenylalanin, DL-Threonin, DL-Prolin, DL-Histidin, DL-Valin, DL-Tyrosin, DL-Tryptophan), 250 x 4.0 mm (PN: r15.hp.s2504) | | |
| ReproSil Chiral-AGP, 5 µm | 300 A° Silicagel with chiral AGP-Protein, USP-L41 | | |
| 100 x 4.0 mm | (PN: r35.agp.s1004) | 150 x 2.0 mm | (PN: r35.agp.s1502) |
| 150 x 3.0 mm | (PN: r35.agp.s1503) | 100 x 2.0 mm | (PN: r35.agp.s1002) |
| 100 x 3.0 mm | (PN: r35.agp.s1003) | 50 x 2.0 mm | (PN: r35.agp.s0502) |
| 50 x 3.0 mm | (PN: r35.agp.s0503) | | |
| Guards: 5 x 3.0 mm: 2 pieces | (PN: r35.agp.v0003) | Guards: 5 x 2.0 mm: 2 pieces | (PN: r35.agp.v0002) |
| Guard-holder, direct | (PN: 81.00) | Guard-holder, direct | (PN: 91.00) |



Dr. Maisch

Any Column, Any Size, Any Media

Distributor:



Dr. Maisch HPLC GmbH
Beim Brückle 14
D-72119 Ammerbuch
T: +49 (0) 7073 50357
F: +49 (0) 7073 4216
www.dr-maisch.com
www.modcol.com
E-Mail: info@dr-maisch.com



PDF brochure
for download